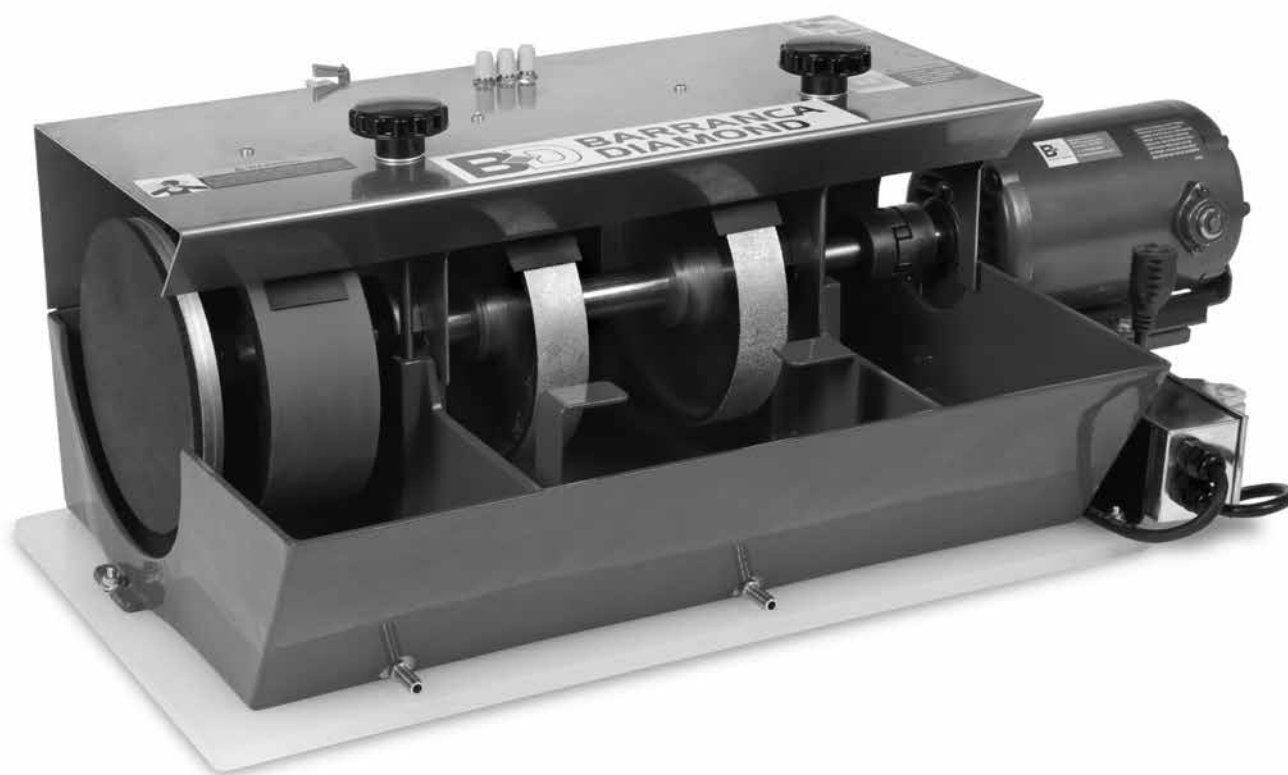




SUPER CABMAKER-GP8 & GP8 W/FPS

OWNER'S MANUAL & PARTS LIST



Revision 106	01.2022
Manual Part No. 168687	

Caution: Read all safety and operating instructions before using this equipment. This manual **MUST** accompany the equipment at all times.

Barranca Diamond Products, Inc.
1315 Storm Parkway
Torrance, CA 90501
Toll-Free: (800) 630-7682
Phone: (310) 523-5867
Fax: (310) 257-3063
www.barrancadiamond.com

INTRODUCTION

Thank you for selecting the Barranca Diamond GP-8 Super Cabmaker. We are certain that you will be pleased with your purchase. Barranca Diamond takes pride in producing top quality products for hobbyists and commercial lapidary users throughout the world. This product is manufactured in the United States.

This owner's manual contains information necessary to operate and maintain your GP-8 Super Cabmaker safely and correctly. Operated correctly, the GP-8 Super Cabmaker should provide you with years of service. Please take the time to familiarize yourself with the GP-8 Super Cabmaker by reading and reviewing this manual.

If you should have questions concerning your GP-8 Super Cabmaker, please call Barranca Diamond at: (310) 523-5867 or Toll Free: (800) 630-7682.

TABLE OF CONTENTS

SAFETY

Safety Precautions	3
California Proposition 65 Warning	6
Electrical Requirements	7-8
Safety Labels	9

GP-8 SPECIFICATIONS

Specifications	10-11
----------------	-------

SETUP

Contents	12
Unpacking	12
Transport	12

OPERATION AND ADJUSTMENT

Pre-Start	13
Start-Up	13
Pump Set-Up	14
Needle Valves	15
Drain Valves	15
Diamond Wheels	15-16
Expandable Drum & Resin Belts	17
Polishing with Diamond Paste	17-18
Sanding and Polishing Flat (7" Discs)	18-19
Polishing with Leather Buff Pad	19

MAINTENANCE

Grinding Wheel Replacement	20
Shaft Reassembly	21-22
Arbor Assembly	23
Electric Motor	23
Submersible Pump	23

EXPLODED VIEW & PARTS LIST

Exploded View & Parts List	24-29
Accessories	30-33

WARRANTY

Warranty	37
----------	----

CUSTOMER SERVICE

Replacement Parts	38
Returns	38
Packaging Instructions	39

SAFETY PRECAUTIONS

Read and follow all safety, operating and maintenance instructions. Failure to read and follow these instructions could result in injury or death to you or others. Failure to read and follow these instructions could also result in damage and/or reduced equipment life. In order to prevent injury, the following safety precautions should be followed at all times!

READ OWNER'S MANUAL BEFORE USE

Before using this equipment, ensure that the person operating this machine reads and understands all of the instructions in the manual. Precaution is the best insurance against accidents. Read and understand all safety precautions, messages, warnings and hazard symbols. You are responsible for your own safety.

ALWAYS USE SAFETY GLASSES

Safety glasses should always be worn when working around power tools. In addition, a face, dust mask or respirator should be worn if a cutting operation is dusty. Everyday eyeglasses only have impact resistant lenses and may not prevent eye injury - they are NOT safety glasses.

USE PROPER APPAREL

Do not wear loose clothing, gloves, neckties, rings, bracelets or other jewelry that may be caught in moving parts. Non-slip footwear is recommended. Wear protective hair covering to contain long hair. Hand protection (plastic gloves) and a shop bib are recommended during use to prevent stains to clothing. Do not touch the work material until the motor is off and the machine has come to a complete stop.

ALWAYS USE HEARING PROTECTION

To reduce the possibility of hearing loss, always use hearing protection when operating power equipment.

ELECTRICAL SHOCK

Never touch electrical wires or motor components while the motor is running. Exposed, frayed or worn electrical wiring and plugs can be sources of electrical shock that could cause severe injury or burns. Use a GFCI (Ground Fault Circuit Interrupter) attached to the main motor power cord plug and keep plugged into the power receptacle outlet source.

DISCONNECT TOOLS

Power tools should always be disconnected before servicing or when changing accessories, such as blades, bits, cutters and the like.

REDUCE THE RISK OF UNINTENTIONAL STARTS

Make sure the ON/OFF switch is in the OFF position before plugging in a power tool.

ROTATING OR MOVING PARTS

Keep hands, feet, hair, and clothing away from all moving parts to prevent injury. Never operate the motor with covers, shrouds or guards removed.

MAINTAIN TOOLS WITH CARE

Keep tools clean for the best and safest performance. Always follow maintenance instructions for lubricating and when changing accessories.

KEEP WORK AREA CLEAN

Cluttered work areas and benches invite accidents.

DO NOT USE IN DANGEROUS OR HAZARDOUS ENVIRONMENTS

Do not operate equipment in dangerous or hazardous environments. Do not use power tools in damp or wet locations nor expose them to rain. Always keep the work area well lighted. Always work in a well ventilated area.

REMOVE ADJUSTING KEYS AND WRENCHES

Form a habit of checking to see that keys, tools, rock material and adjusting wrenches are removed from the Cabmaker before plugging in the power cord and operating the unit.

KEEP CHILDREN AWAY

All visitors and children should be kept a safe distance from the work area. Keep power cords disconnected when tool is not in use.

MAKE THE WORKSHOP KID-PROOF

Make the workshop kid-proof by using padlocks, master switches and by disconnecting all power cords.

USE THE RIGHT TOOL

Do not force a tool or an attachment to do a job that it was not designed to do.

SECURE WORK

Clamps or a vise should be used to hold work whenever practical. Keeping your hands free to operate a power tool is safer.

DO NOT OVERREACH

Keep proper footing and balance at all times by not overreaching.

MAINTAIN TOOLS WITH CARE

Keep the diamond tools in good condition by replacing coolant water and cleaning the reservoir frequently for the best and safest performance. Always follow the maintenance instructions for servicing the unit.

SHUTDOWN OF THE UNIT

The machine should always be shutdown (ON/OFF switch placed in the OFF position) and the power cord disconnected to the power source before servicing or when changing accessories.

NEVER LEAVE A TOOL RUNNING UNATTENDED – TURN POWER OFF

Do not leave a tool until it comes to a complete stop. Always turn the tool off, and disconnect the power cord from its source. Do not leave extension cords attached to the power cord or power receptacle (wall outlet) when leaving the work area.

CHECK FOR DAMAGED OR WORN PARTS

Before using a power tool, check for damaged parts. Always check moving parts for proper alignment or binding. Check for broken parts and mountings and all other conditions that may affect the operation of the power tool. Any damaged part should be properly repaired or replaced.

USE RECOMMENDED ACCESSORIES AND PARTS

Consult the owner's manual for recommended accessories and parts. Using improper parts and accessories may increase the risk of personal and/or bystander injury.

USE THE PROPER EXTENSION CORD

If using an extension cord, make sure it is in good condition first. When using an extension cord, be sure to use one heavy enough to carry the current your product will draw. An undersized cord will cause a drop in line voltage that will result in a loss of power and overheating. Table on page 8 shows the correct AWG (American Wire Gauge) size to use depending on cord length and nameplate ampere rating. If in doubt, use the next heavier gauge. The smaller the gauge number, the heavier the cord.

USE A GROUND FAULT CIRCUIT INTERRUPTER

Use of a Ground Fault Circuit Interrupter (GFCI) between the end of power cord and wall outlet is required at all times.

USE THE PROPER POWER SOURCE

This tool is only to be used with a 120 volt 60 HZ power source. Ensure power source is at least 15 amps and 110 to 120 volts. Low voltage current can adversely effect electric motor performance and overall life.

USE THE RECOMMENDED COOLING AND LUBRICATING FLUIDS

Never operate a tool dry that requires coolant or lubricant. This can lead to shortened tool life, tool damage and personal injury.

MAINTAIN TOOLS WITH CARE

Always follow the maintenance instructions for servicing the GP-8 Super Cabmaker.

SILICA DUST WARNING

Grinding/cutting/drilling of masonry, concrete, metal and other materials with silica in their composition may give off dust or mists containing crystalline silica. Silica is a basic component of sand, quartz, brick clay, granite and numerous other minerals and rocks. Repeated and/or substantial inhalation of airborne crystalline silica can cause serious or fatal respiratory diseases, including silicosis. In addition, California and some other authorities have listed respirable crystalline silica as a substance known to cause cancer. When cutting such materials, always follow respiratory precautions.

Use appropriate NIOSH-approved respiratory protection where dust hazard may occur. Paper masks or surgical masks without a NIOSH approval number are not recommended because they do little to protect the worker. For more information about respirator programs, including what respirators have received NIOSH approval as safe and effective, please visit the NIOSH website at:

<http://www.cdc.gov/niosh/topics/respirators>

Observe OSHA regulations for respirator use (29 C.F.R. §1910.134 and §1503.1).

Visit <http://www.osha.gov> for more information.

CALIFORNIA PROPOSITION 65 MESSAGE

Some dust created by power sanding, sawing, grinding, drilling, and other construction activities contain chemicals known (to the State of California) to cause cancer, birth defects or other reproductive harm. Some examples of these chemicals are:

- Lead, from lead-based paints
- Crystalline silica, from bricks and cement and other masonry products
- Arsenic and chromium, from chemically treated lumber

For further information, consult the following sources:

<http://www.osha.gov/dsg/topics/silicacrystalline/index.html>

<http://www.cdc.gov/niosh/docs/96-112/>

<http://oehha.ca.gov/prop65/law/P65law72003.html>

<http://www.dir.ca.gov/Title8/sub4.html>

<http://www.P65warnings.ca.gov>

Your risk from these exposures varies depending on how often you do this type of work. To reduce your exposure to these chemicals, work in a well-ventilated area, and work with approved safety equipment, such as dust masks that are specially designed to filter out microscopic particles. Where use of a dust extraction device is possible, it should be used. To achieve a high level of dust collection, use an industrial HEPA vacuum cleaner. Observe OSHA 29 CFR part 1926.57 and 1926.103.

ELECTRICAL REQUIREMENTS AND GROUNDING INSTRUCTIONS

In order to prevent potential electrical shock and injury, the following electrical safety precautions and symbols should be followed at all times!

In case of a malfunction or breakdown, grounding provides a path of least resistance for electric current to reduce the risk of electric shock. This tool is equipped with an electric cord having an equipment-grounding conductor and a grounding plug. The plug must be plugged into a matching outlet that is properly installed and grounded in accordance with all local codes and ordinances.

- Do not modify the plug provided – if it will not fit the outlet; have the proper outlet installed by a qualified electrician.
- Improper connections of the equipment-grounding conductor can result in a risk of electric shock. The equipment-grounding conductor is the wire that has a green outer surface, with or without yellow stripes. If repair or replacement of the electric cord or plug is necessary, do not connect the equipment-grounding conductor to a live terminal.
- Check with a qualified electrician or service personnel if the grounding instructions are not completely understood, or if in doubt as to whether the tool is properly grounded.
- Use only 3-wire extension cords that have 3-prong grounding plugs and 3-pole receptacles that accept the tool's plug.
- Repair or replace a damaged or worn cord immediately.

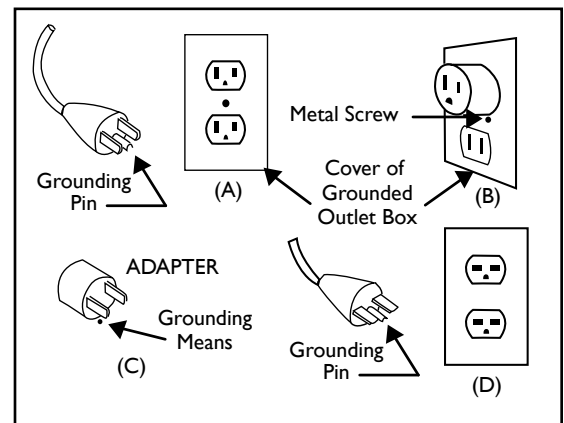
This tool is intended for use on a circuit that has an outlet that looks like the one shown in Sketch A. The tool has a grounding plug that looks like the plug illustrated in Sketch A. A temporary adapter, which looks like the adapter illustrated in sketches B and C, may be used to connect this plug to a 2-pole receptacle as shown in Sketch B, if a properly grounded outlet is not available. The temporary adapter should be used only until a properly grounded outlet can be installed by a qualified electrician. The green-colored rigid ear, plug, and the like, extending from the adapter, must be connected to a permanent ground, such as a properly grounded outlet box.

NOTE: Use of a temporary adapter is not permitted in Canada.

To reduce the risk of electrocution, keep all connections dry and off the ground.

A Ground Fault Circuit Interrupter (GFCI) should be provided on the circuit(s) or outlet(s) to be used for this power tool. Receptacles are available, having built-in GFCI protection, and may be used for this measure of safety.

When using an extension cord, the GFCI should be installed closest to the power source, followed by the extension cord, and lastly, the tool.

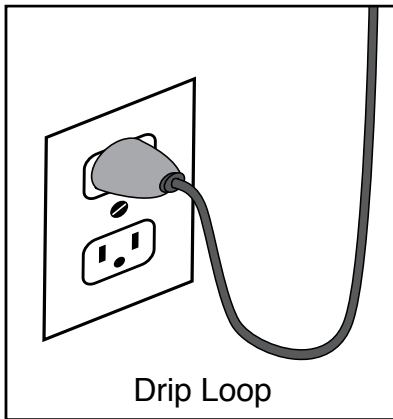


Circuit and Adapter Information

ELECTRICAL REQUIREMENTS AND GROUNDING INSTRUCTIONS

To avoid the possibility of the appliance plug or receptacle getting wet, position the tool to one side of a wall mounted receptacle. This will prevent water from dripping onto the receptacle or plug. A “drip loop,” shown in illustration below, should be arranged by the user to properly position the power cord relative to the power source.

The “drip loop” is the part of the cord below the level of the receptacle, or the connector, if an extension cord is used. This method of positioning the cord prevents the travel of water along the power cord and coming in contact with the receptacle.



If the plug or receptacle gets wet, DO NOT unplug the cord. Disconnect the fuse or circuit breaker that supplies power to the tool. Then unplug and examine for presence of water in the receptacle.

Use only extension cords that are intended for outdoor use. These extension cords are identified by a marking “Acceptable for use with outdoor appliances; store indoors while not in use.” Use only extension cords having an electrical rating not less than the rating of the product. Do not use damaged extension cords. Examine extension cords before using and replace if damaged. Do not abuse extension cords and do not yank on any cord to disconnect. Keep cords away from heat and sharp

edges. Always disconnect the extension cord from the receptacle before disconnecting the product from the extension cord.

To reduce the risk of electrocution, keep all connections dry and off the ground. Don't touch the plug with wet hands.

Use of undersized extension cords will result in low voltage to the motor that can result in motor burnout and premature failure. Barranca Diamond warns that equipment returned to us showing signs of being run in a low voltage condition, through the use of undersized extension cords, will be repaired or replaced totally at the customer's expense. There will be no warranty claim.

To choose the proper extension cord:

- Locate the length of extension cord needed in table below.
- Once the proper length is found, move down the column to obtain the correct AWG size required for that length of extension cord.

MOTOR SPECS			EXTENSION CORD LENGTH			
Motor	Voltage	Amps	25'	50'	100'	200'
168504	115V 1 Ph	7.2	16 ga	14 ga	10 ga	8 ga

SAFETY LABEL LOCATIONS

Safety labels contain important safety information. Please read the information contained on each safety label. These labels are considered a permanent part of your saw. If a label comes off or becomes hard to read, contact Barranca Diamond or your dealer for a replacement.



Part # 164202

A



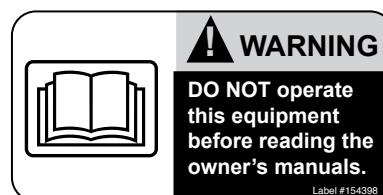
Part # 155587

B



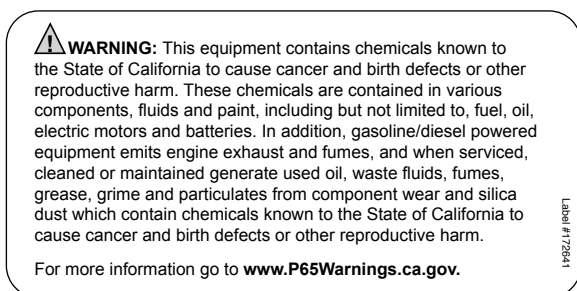
Part # 171239

C



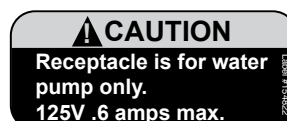
Part # 154398

D



Part # 172641

E



Part # 154822

F



Part # 155678

G

Decal	Location
A	Hood
B	Hood
C	Hood
D	Hood
E	Motor
F	Motor
G	Motor

Description
Warning - Dust Control
Caution - Guards in Place
QR Code for Manuals & Safety Information
Warning- Read Manual
Warning - Silica Prop 65
Caution - Receptacle
Caution - Use with GFCI only

Weight:	115 lbs
Main Motor:	Baldor
Horsepower:	1/2 HP
Motor Voltage/Frequency:	115 volt/60Hz
Amperage:	7.2 Amps
Motor RPM:	1,725 RPM Fixed
Motor Arbor Diameter:	1/2"
Duty:	Continuous, automatic thermal protection shut off, manual restart switch
Motor Arbor Bearings:	Ball Bearings, permanently sealed
Shaft Bearings:	Permanently sealed 1" OD shaft ball bearings fit into aluminum tank and upper hood housing
Diamond Wheel Mesh Sizes:	80 and 170 mesh
Diamond Resin Belts:	400, 600, 1200, and 3000 mesh 8" x 3" wide belts
Expandable Rubber Drum:	8" x 3" wide x 1" arbor
Shaft Type:	21.31" precision machined stainless steel
Wheel and Blade Flanges:	Aluminum 2" OD x 1" bore
Wheel Spacers:	1" ID aluminum (length varies for wheels and drum)
Convex Polishing End Hub:	8" aluminum hub disc with 1" - 14" left hand thread
Water Pump:	MK Submersible pump (part #151271), variable flow control with 1/4" ID tubing.
Flat Polishing End Hub:	8" aluminum hub disc with 1" - 14" left hand thread
Water Control Valves:	3 stainless steel control valves, brass lever cock valve with barb for 1/4" ID tubing mounted on rear of the hood
ON/OFF Switch Box:	Lever operated switch box and pigtail female plug receptacle for submersible pump

INCLUDED ACCESSORIES**Option 1 Part# 168077** (Basic Accessories Package)

- 1/2 HP thermal protected 1,725 RPM direct drive motor
 - 80 & 170 grit 8" x 1-1/2" brazed metal-bond diamond wheels
 - 400, 600, 1,200 & 3,000 grit 8" x 3" mesh resin-bond diamond belts
 - 8,000, 14,000 & 50,000 grit polishing compound (individual 5 gram syringes)
 - 8" x 3" rubber expandable drum
 - Three 8" Polytex polishing pads
 - 8" convex foam rubber lined aluminum polishing hub
 - 8" leather polishing pad
 - Carbide dressing stick
 - 3M™ feathering disc adhesive
 - Submersible water pump & hose
 - Three stainless steel water control valves
 - GFCI (110V motors only)
 - Lightweight baseboard
-

Option 2 Part# 168077-FPS (Full Accessories Package)

- 1/2 HP thermal protected 1,725 RPM direct drive motor
- 80 & 170 grit 8" x 1-1/2" brazed metal-bond diamond wheels
- 400, 600, 1,200, & 3,000, grit 8" x 3" mesh resin-bond diamond belts
- 8,000, 14,000 & 50,000 grit polishing compound (individual 5 gram syringes)
- 8" x 3" rubber expandable drum
- Three 8" Polytex polishing pads
- 8" convex foam rubber lined aluminum polishing hub
- 8" flat aluminum hook & loop sanding and polishing hub
- Six 7" resin diamond polishing discs (220, 400, 800, 1,800, 3,500 & 8,500 grit)
- Two 7" electroplated sanding discs (70 & 120 grit)
- 8" leather polishing pad
- Carbide dressing stick
- 3M™ feathering disc adhesive
- Submersible water pump & hose
- Three stainless steel water control valves
- Loc-Line magnetic manifold and nozzle links/tips
- GFCI (110V motors only)
- Lightweight baseboard

CONTENTS

In the shipping crate, you will find one Barranca Diamond GP-8 Super Cabmaker mounted to a plastic baseboard and one Ground Fault Circuit Interrupter (GFCI).

The accessories for the GP-8 Super Cabmaker will be included depending on which option you choose (see page 30-33).

UNPACKING

Your GP-8 Super Cabmaker has been shipped from the factory thoroughly inspected and tested. Remove the crating material (wood and plastic) from the baseboard and around the machine carefully using a Phillips and standard screwdriver, wire cutter and box cutter knife. Any accessories should be removed from the unit and put aside.

TRANSPORT

For safe transport, disconnect the submersible pump and power cord and remove lubricant and water from the wheel reservoirs of the GP-8 Super Cabmaker.

PRE-START

Check all four motor mount bolts (Fig 1) to make sure they are tight.

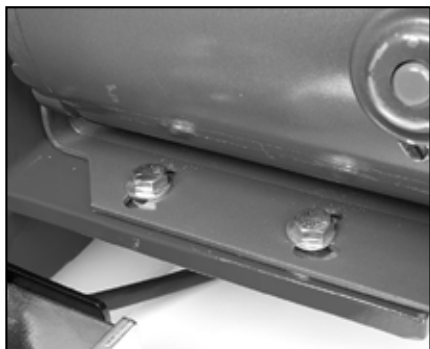


Fig 1 - Front motor mount bolts



Fig 2 - GFCI

START-UP

Place the GP-8 Super Cabmaker on a strong flat table or bench. A power test can now be conducted to make sure the motor is operating and all moving wheels and blades are correctly aligned and secured to the main shaft. Plug the enclosed Ground Fault Circuit Interrupter (GFCI) into a 110 to 120 volt 60 Hz minimum 15 amp circuit wall outlet (Fig 2).

If needed, plug an extension cord into the GFCI. If an extension cord is used, refer to Table 1 on page 8 for the correct AWG size. The GP-8 Super Cabmaker power cord is attached to the ON/OFF switch box on the right side of the unit. Make sure the switch box lever is in the OFF (Fig 3) position before plugging into the GFCI or extension cord.

To energize and test the GFCI, push the RESET button (Fig 4) on the switch and a red window will appear to indicate the switch is energized. If the TEST button is pushed, the switch will click off indicating the GFCI is functioning correctly. Push the reset button again to re-energize the GFCI.

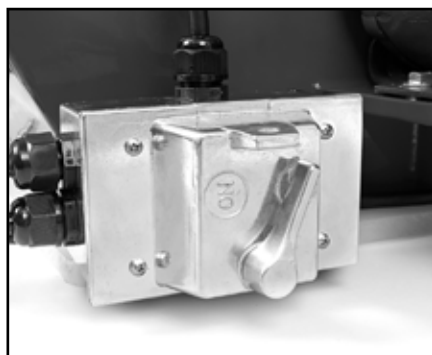


Fig 3 - Power switch in the OFF position



Fig 4 - GFCI reset button

The GP-8 Super Cabmaker is now ready for a power up test to be performed. Turn the lever to the ON position (Fig 5) on the switch box. Make sure no unusual sounds or vibrations occur when the motor engages. If the motor coupling should loosen, use an allen wrench to tighten the set screws. Liquid thread locker (removable type) can be used on the setscrew threads to prevent loosening during use.

PUMP SET-UP

A submersible electric water pump is used to supply water to the polishing wheels as coolant and lubricant. It is recommended that a 5 gallon bucket be used as a water reservoir into which the submersible pump should be placed. The level of the reservoir water should be monitored so that water pump always remains fully submerged.

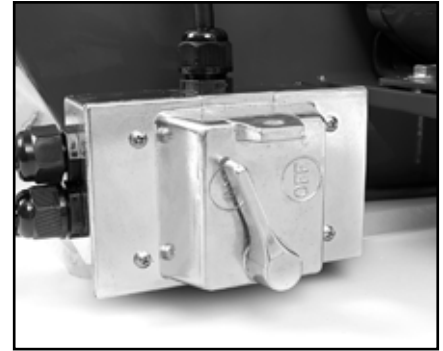


Fig 5 - Power switch in the ON position



Fig 6 - Pump hose attached to water pump outlet



Fig 7 - Water valve

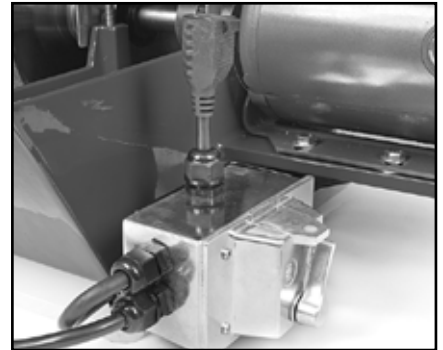


Fig 8 - Electrical outlet for water pump

Connect the pump to the brass ON/OFF barbed lever valve at the rear of the hood with the included 1/4" ID water hose. Insert one end of the 1/4" ID water hose over the water pump outlet (Fig 6) and the other end over the barbed end of the water valve inlet (Fig 7).

The pump can be plugged into the female receptacle plug accessory attached to the main switch box (Fig 8) when using the GP-8 Super Cabmaker. Power to run the pump will occur once the switch box lever is placed in the ON position. The pump should be operated in maximum flow setting. This will allow sufficient water to reach the valve on the rear of the hood to provide water to each of the three needle valves that control water flow to each of the three work stations.

Keep the water hose away from the electric motor and to prevent damage from moving parts and electric shock hazard. The pump should always be used with clear, clean water so as to avoid grit/abrasive material, mud or rock fragments from scratching the gemstones during polishing or clogging the pump valves. For optimal water flow, adjust both the pump and the brass intake valve to their fully open positions. Should less water be desired, turn the brass lever on the inlet valve to restrict flow to the hood (Fig 7).

NEEDLE VALVES

The three stainless needle valves (Fig 9) are for fine control of water to each of the three grinding and polishing stations. For best results, close the valves to the stations not in use. To shut off flow to a needle valve, simply turn the grey ribbed knob clockwise until it closes to a firm stop (do not over-tighten). To open maximum flow to a needle valve, simply turn the grey ribbed knob counterclockwise until the valve stops. It may take up to 30 seconds for water flow rate to change to a specific station.

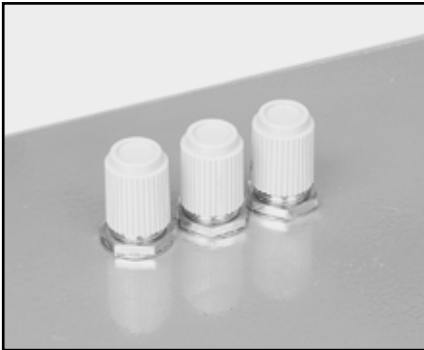


Fig 9 - The three stainless needle valves

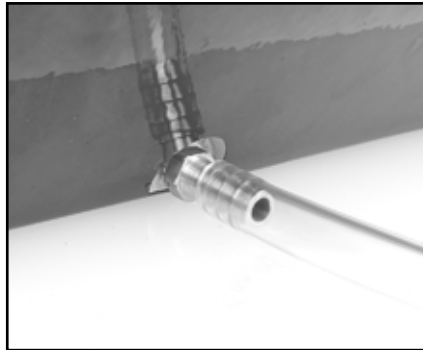


Fig 10 - Drain with hose installed

DRAIN

A length of 3/8" ID tubing is provided with the GP-8 Super Cabmaker for drainage of excess water from the front base of the reservoir where a drain is located at the base of the reservoir (Fig 10).

To drain off the excess build-up of cooling water on the diamond wheels and expandable drum belts, connect length of 3/8" ID clear tubing to the drain and route it into a 5 gallon collection bucket or drain for dirty water.

Do not recycle dirty water from the drain valves into a collection bucket for pumping back up to the intake valve on the rear of the hood as the contaminants (rock grit, mud, slurry and abrasive particles) will likely scratch the gemstone material being worked and possibly clog the stainless steel water control valves or submersible pump.

DIAMOND WHEELS

The GP-8 Super Cabmaker comes equipped with two 8" OD x 1-1/2" brazed diamond wheels in two diamond abrasive grit sizes (80 and 170 mesh or grit). Both wheels are manufactured to a low tolerance OD circumference run-out for maximum wheel life and to prevent pounding and poor performance during grinding. The high temperature brazed diamond bond provides excellent abrasive performance when grinding the rough shape of the gemstone material. Diamond wheels must have an uninterrupted flow of water during use for proper cooling and flushing of slurry and rock fragments.

A tool rest is attached to the reservoir base of the GP-8 Super Cabmaker in front of both the 80 and 170 grit diamond wheels (Fig 11). If a dop-stick is being used to hold the gemstone material, the user can use the tool rest to securely hold the dop-stick while grinding, shaping and sanding. The tool rest

mount can be adjusted by loosening the positioning bolt (Fig 12), moving the tool rest to the desired height, angle and/or distance from the wheel, and then retightening the positioning bolt. The tool rest can also be completely removed (Fig 13) from the GP-8 Super Cabmaker base if the operator so desires.

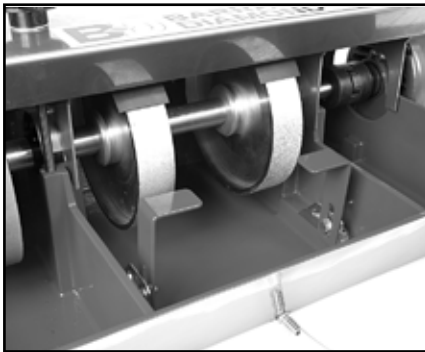


Fig 11 - Tool rests



Fig 12 - Tool rest positioning bolt

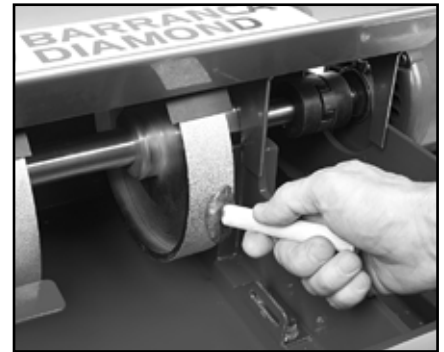


Fig 13 - Grinding with tool rest removed



Fig 14 - Carbide stick applied to diamond wheel

Rough shaping of the gemstone material should be performed first with the 80-grit wheel with maximum water flow from the hood mounted water control valve. It is recommended that you only pump clean water to the GP-8 Super Cabmaker water system and never recycle your drain water back to your grinding wheels or expandable drum.

Due to the steel alloy core construction and brazed nickel diamond bounding of both wheels, a "ringing" noise will be heard during grinding and sanding. This is normal and should be of no concern. Should coolant/flushing water flow be interrupted while grinding with the brazed diamond wheels, the diamond may "glaze over" or dull the diamond bond. The diamond bond can be "dressed open" or sharpened periodically by taking the green carbide stick and lightly touching it to the diamond grinding face of the wheel while rotating (Fig 14). Only apply a slight pressure - for no more than 2 to 3 seconds - with full flow of cooling water when "dressing open" the wheels. Do not over-sharpen as the wheel life will be shortened. Never use the brazed diamond wheels dry under any circumstances.

Always ensure there is a clear, constant drip of water flowing off the rotating wheels into the reservoir tank. Also, don't over force the gemstone material into the diamond wheel surface while grinding. Allow the diamond bond on the wheel to work smoothly with a constant and steady application of hand pressure. Rotate your gemstone frequently while grinding to uniformly remove material, nicks and flat spots while rounding and contouring.

Remember, satisfactory results are dependent on the user's skill and experience, as well as the gemstone and equipment being used.

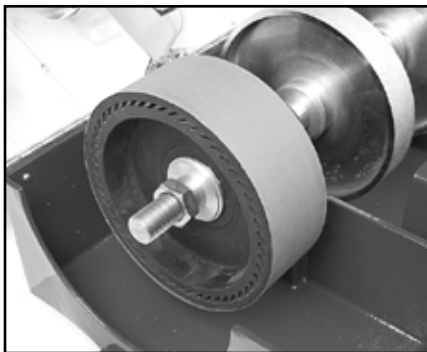


Fig 15 - Resin belt installed and centered on expandable drum



Fig 16 - Polytex pad being applied to the convex polishing disc

EXPANDABLE DRUM AND DIAMOND RESIN BELTS

The GP-8 Super Cabmaker comes with four diamond resin belts (8" OD x 3" wide) in abrasive grit sizes: 400, 600, 1,200, and 3,000. These are to be placed over the edge and outer rim of the 8" x 3" rubber expandable drum (Fig 15).

Be sure to center the diamond resin belt so that the width of the belt fits completely over the width of the rubber drum. Once the GP-8 Super Cabmaker is turned on, the rotation of the shaft and rubber drum will cause the drum to expand outward, which will expand the rubber drum and tension the belt on the drum. It is to be expected that the diamond resin belts will slide somewhat sideways while sanding or polishing material. To safely and correctly use the belt, shut the unit off and reposition or realign the belt over the drum and restart the unit.

Under no circumstances should the belts be used dry, as the build-up of heat from the grinding friction with the gemstone material will cause the belts to wear out prematurely and possibly tear. Therefore, keep a constant stream of water from the needle water control valve on the top of the hood (far left valve) on at all times. Do not circulate dirty water from the reservoir tank or from a collection container back into the water valves or else contaminant abrasive particles may scratch the gemstone. Always pump from a clear and clean water reservoir to the diamond wheels and belts. For best results, always dry the gemstone material and check for scratches before proceeding to the next wheel or belt diamond grit size. Do not skip belts in the four belt sequence (400, 600, 1,200, and 3,000 grit).

POLISHING WITH DIAMOND PASTE

The GP-8 Super Cabmaker comes with three syringes (5 grams each) of diamond paste in abrasive grit sizes: 8,000, 14,000 and 50,000 mesh. These diamond pastes are to be used with the three 8" OD Polytex polishing pads with adhesive backing on the foam covered convex 8" end polishing disc. Once the gemstone material has been sanded and polished with the 3,000 grit diamond resin belt, remove the paper backing on the Polytex pad to expose the adhesive surface, placing it firmly without creases on the foam rubber convex surface of the 8" end polishing disc on the left side of the GP-8 Super Cabmaker (Fig 16).

Lightly smear with your fingertip a small amount of diamond paste on the center of the mounted Polytex pad with the unit operating and the polishing disc rotating. The diamond paste will evenly spread over the surface of the Polytex pad once polishing of the gemstone starts. Move the gemstone in a rocking and rotating motion from the center of the disc toward the outside edge to achieve a uniform polished surface.

Use only one dedicated Polytex polishing pad with each respective diamond paste syringe (i.e. keep a labeled Polytex pad for the 8,000 grit paste in a zip-lock bag labeled 8,000 grit). Do not use a single Polytex pad with two or more diamond pastes or else cross-contamination and poor polishing of the gemstone material may result.

The Polytex pad can be removed from the foam rubber covering of the convex polishing disc by slowly pulling the Polytex pad off the foam and placing it in a zip-lock plastic bag properly labeled with the syringe paste diamond grit size for future use. No water or extender fluid is needed to effectively disperse the diamond paste from the syringe to the Polytex pads. If the adhesive backing becomes weak with repeated use, you can apply a few drops of 3M On/Off adhesive to improve the adhesive connection to the foam disc.



Fig 17 - Accessories Option 2

SANDING AND POLISHING FLAT (7" DISCS) Option 2 (Accessories)

GP8 Super Cabmaker employs an 8" end of shaft aluminum faced hook lined flat polishing system that mounts on the left hand end of the main arbor shaft. User will have to first remove the convex rubber faced aluminum disc (left hand thread, rotate disc clockwise to loosen and remove). Once removed, thread on the flat faced hook lined 8" aluminum flat sanding/polishing disc which will act as a backer mounting disc to the 7" electroplated sanding pads and 7" resin diamond polishing pads.

A LockLine manifold (magnetic base) and flexible nozzle line system must be used in with these 7" sanding and polishing pads to direct cooling/flushing water in a mist spray onto the electroplated and resin diamond surfaces mounted vertically with hook & loop on the aluminum flat faced disc (Fig 18).

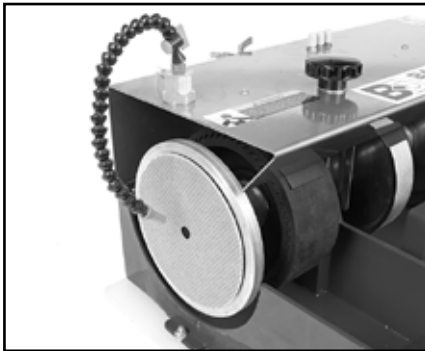


Fig 18 - LockLine & Nozzle connected

The LockLine magnetic base mounted nozzle will need to be attached with 3/8" OD x 1/4" ID clear plastic tubing to the submersible water pump placed in a 5 gallon bucket to provide a supply of clean cooling water (do not recycle dirty water to the LockLine system). The clear water feed tubing will connect to the LockLine manifold at a brass barb fitting (Fig 19).

Water flow is controlled by adjusting the plastic knob on the LockLine flexible line so that a fine mist is dispensed onto the center face of the 7" electroplated and resin diamond polishing pads.



Fig 19 - Connection tube and valve

To use 7" sanding electroplated diamond pads (70 and 120 grit), first mount the pad centered over the hook lined flat aluminum disc, position the LockLine nozzle to center of the pad and turn on the GP8 main power switch. The submersible pump will need to be plugged into the accessory receptacle (female) on the On/Off switch box. After a few seconds, the pump will deliver water through the feed clear tubing to the LockLine manifold and flexible nozzle where the spray mist can be regulated. Only a fine mist is required to flush and cool the electroplated pads while sanding saw and grinding marks out of a gemstone specimen.



Fig 20 - Sanding gemstone

Move the specimen face to be sanding slowly across the lower 1/2 face of the electroplated pad (70 grit) and periodically inspect the gemstone face by drying to determine whether the saw and or grinding marks have been sufficiently removed (Fig 20).

Once the majority of coarse saw and grinding marks have been sanded off with the 70 grit electroplated pad, the user can replace the 70 grit pad with the 120 grit electroplated pad and repeat the process to sand flat all visible saw or grinding marks or uneven surfaces. Dry off gemstone and inspect closely.

Upon satisfactory sanding of the gemstone with 70 and 120 grit 7" electroplated discs, mount the red 220 grit 7" resin diamond polishing pad centered flat aluminum disc and proceed to polishing the gemstone across the lower face of the pad inspecting the face surface frequently. Progress through the 400, 800, 1,800, 3,500, and 8,500 grit 7" resin diamond polishing pads, making sure to closely inspect the gemstone surface closely before proceeding to the next finer (higher numbered sequence) resin diamond pads (Fig 21). In some cases, stubborn scratches or uneven portions of the gemstone face being worked will need to be polished with a lower (coarser) grit resin diamond pad therefore the user is advised to closely inspect the face of his gemstone dry and to retreat back a grit size or lower if necessary. Never skip a grit size when polishing.



Fig 21 - Polishing pad centered on flat aluminum disc

POLISHING WITH THE LEATHER BUFF PAD

For final polished gemstone results, place the 8" cowhide leather pad (rough side out) on the foam polishing end disc using the 3M On/Off adhesive (red box) to hold the leather pad securely while buffing the gemstone in a rocking motion (Figs 22 & 23). Only use a small amount (8 to 10 dabs) of 3M On/Off adhesive on the smooth cowhide surface, smearing it uniformly before placing it over the foam rubber on the polishing disc. When the

final polish finish of your gemstone has been achieved, remove the leather disc and place it in a zip-lock bag to protect it for future use. It is not necessary to use any polishing media or liquid (water) when buffing the gemstone with the leather disc. Be sure to firmly grip the gemstone by hand or with a dop-stick (wood dowel or aluminum rod) cemented or epoxied to the back of the gemstone while using the leather buff pad.



Fig 22

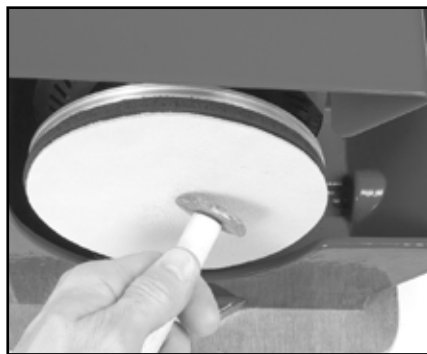


Fig 23

DIAMOND WHEEL/CARBIDE WHEEL REPLACEMENT

When worn-out, the diamond wheels and expandable drum can be removed and replaced. For all models, first prepare the arbor shaft for removal from the body of the GP-8.

1. Unscrew and remove the locking knobs from the hood (Fig 24).
2. Rotate the hinged hood back completely (Fig 25).
3. Using an allen wrench, loosen set screws on the main arbor 1" to motor arbor 1/2" coupler (Fig 26).
4. Once coupler set screws are loosened, lift up arbor assembly and remove (Fig 27).
5. Loosen jam nut on left end of arbor shaft once convex or flat 8" disc is removed (left hand thread).
6. Slide off & remove aluminum flanges and spacers against rubber drum.
7. Use allen wrench to loosen and remove collars mounted to sealed bearings.
8. Slide off bearings, spacers and flanges on metal bond grinding wheels to remove and replace as needed.



Fig 24 - Remove the locking knobs

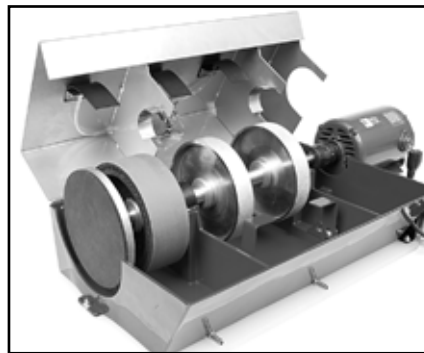


Fig 25 - GP-8 Super Cabmaker with hood rotated back

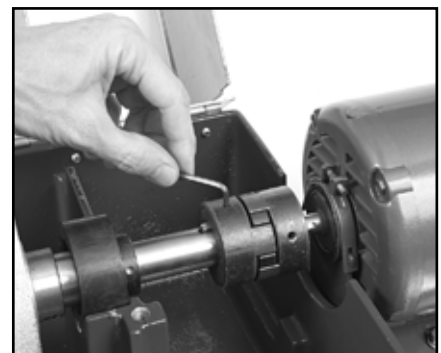


Fig 26 - Use an allen wrench to remove collars

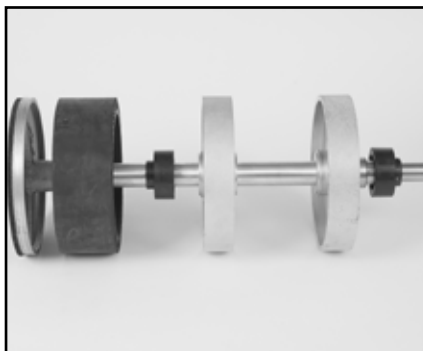


Fig 27 - Arbor Assembly

SHAFT REASSEMBLY

Reassembly of the shaft with the new diamond wheels is the reverse of the disassembly instructions. Please keep the following points in mind when reassembling:

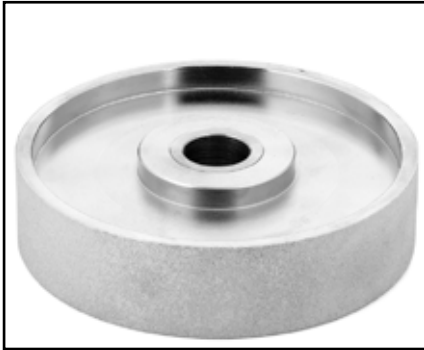


Fig 28 - Outside face of diamond wheel



Fig 29 - Inside face of diamond wheel



Fig 30 - Bearing correctly installed

1. Install diamond wheels with the inside faces facing each other (Fig 28 & 29). Be sure the diamond wheel bushings are installed.
2. The bearings have a permanently mounted bushing that extends from one side of the center bearing. This extension must face away from the diamond wheels (Fig 30 & 31) on both ends of the arbor shaft.
3. The arbor shaft collars have one recessed side and one flat side (Fig 32 & 33). The recessed side should face the bearing and mate against the extended portion of the bearing bushing.
4. There should be a flange installed on both sides of each diamond wheel and the expandable drum. Make sure the concave side of the flange (Fig 34) faces the wheels and drum.

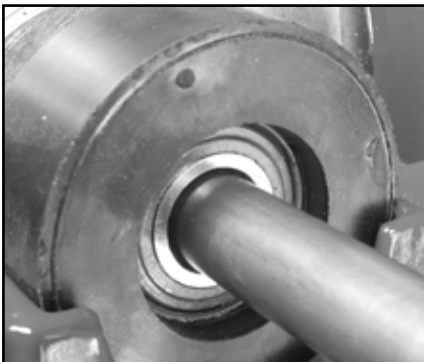


Fig 31 - Bearing incorrectly installed



Fig 32 - Bearing collar correctly installed



Fig 33 - Bearing collar incorrectly installed



Fig 34 - Concave side of flange

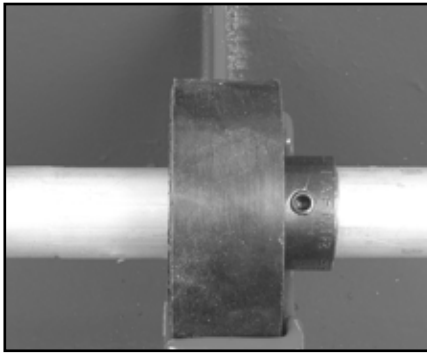


Fig 35 - Bearing correctly seated

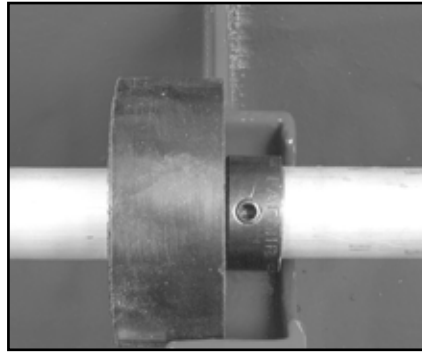


Fig 36 - Bearing incorrectly seated

5. When installing the shaft assembly back in the GP-8 Super Cabmaker, make sure the rubber mounted bearings are centered in the bearing seat (Fig 35 & 36). If the bearings are not centered in the bearing seats make sure the aluminum spacers are in the correct order and that the bearings and arbor collars are properly installed.
6. Install the sanding drum with arrow of rotation facing direction of rotation (Fig 37).
7. Make sure grinding wheel and drum bushings are installed.
8. Remount arbor assembly in gate reservoir, tighten coupling set screws, close hood and retighten the two locking knobs (Fig 38).



Fig 37 - Arrow on drum indicates direction of rotation



Fig 38 - GP8 Unscrew the Cabmaker

ARBOR ASSEMBLY

The GP-8 Super Cabmaker is equipped with a 1" OD arbor shaft, two rubber sealed ball bearings and a shaft 1" to motor arbor 1/2" coupler (Fig 39). Should the bearings wear out on the arbor shaft, grinding and polishing performance and short diamond wheel/belt life may result. Additionally, premature bearing wear may result in permanent damage to the arbor shaft, and motor. This main stainless steel shaft arbor assembly can be purchased from Barranca Diamond as a complete unit. Periodically check the tightness of the hood attachment knobs (Fig 40) to make sure they are securely tightened to the aluminum reservoir body of the GP-8 Super Cabmaker.

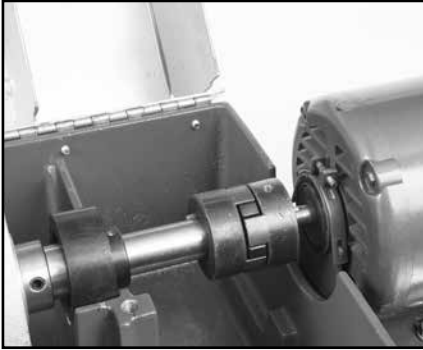


Fig 39 - Shaft to motor arbor coupler

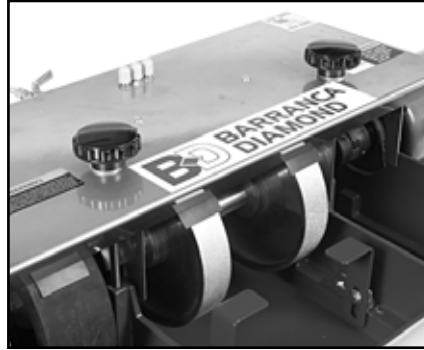


Fig 40 - Hood attachment knobs

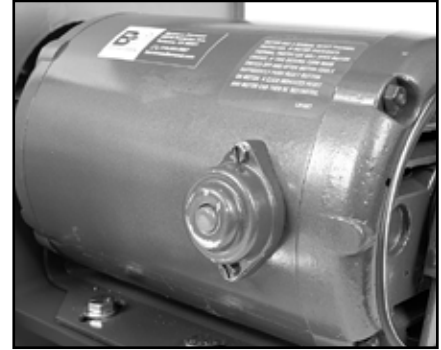


Fig 41 - Motor reset button

ELECTRIC MOTOR

The GP-8 Super Cabmaker is equipped with a Baldor 1/2 HP 1725 RPM single-phase 120 volt 60 Hz 8 amp motor. The motor shaft has sealed ball bearings and requires no lubrication. The motor is protected from thermal damage (overheating) with an automatic shut-off switch. If the motor overheats it will automatically shut off and restart once its internal components cool down and the motor is restarted manually (red button). Be sure to shut off the main motor by placing the switch lever to the OFF position and disconnecting the power source. After allowing the motor to cool (2 to 3 hours), push the red reset button on the side of the motor (Fig 41) and restart the unit by turning the switch to ON. If the motor does not restart after a cool down period, remove the motor and have an authorized repair service center for Baldor inspect the motor. Barranca Diamond can refer you to an authorized motor repair service center in your area.



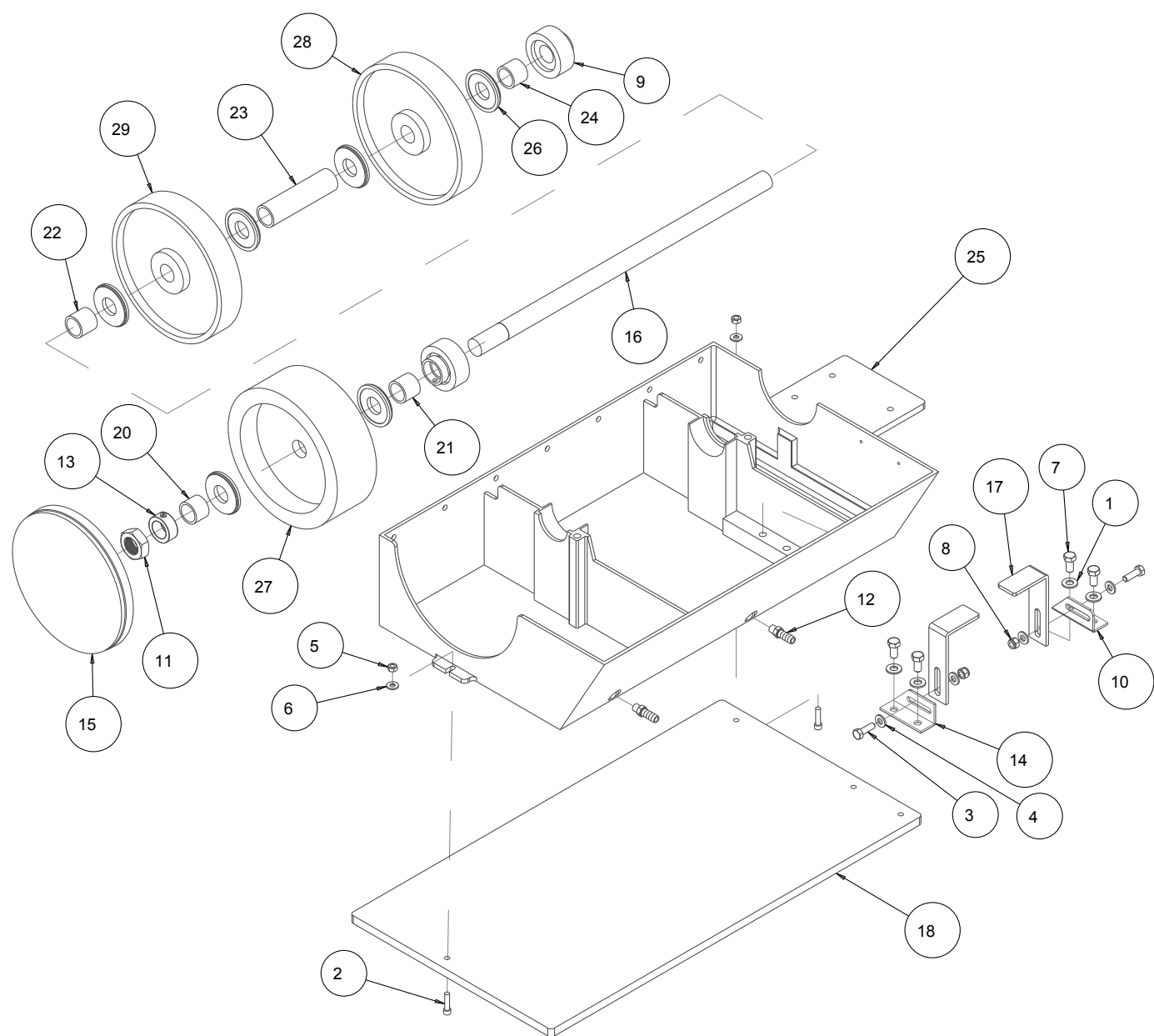
Fig 42 - Water Pump

SUBMERSIBLE PUMP

Periodically remove the plastic inlet cover on the submersible water pump (Fig 42). Remove the outside plastic filter and clean any obstructions such as sludge or rock mud that may be found. Clean the filter with warm, soapy water. Replace the filter and test the pump to ensure it is functioning properly.

NOTES

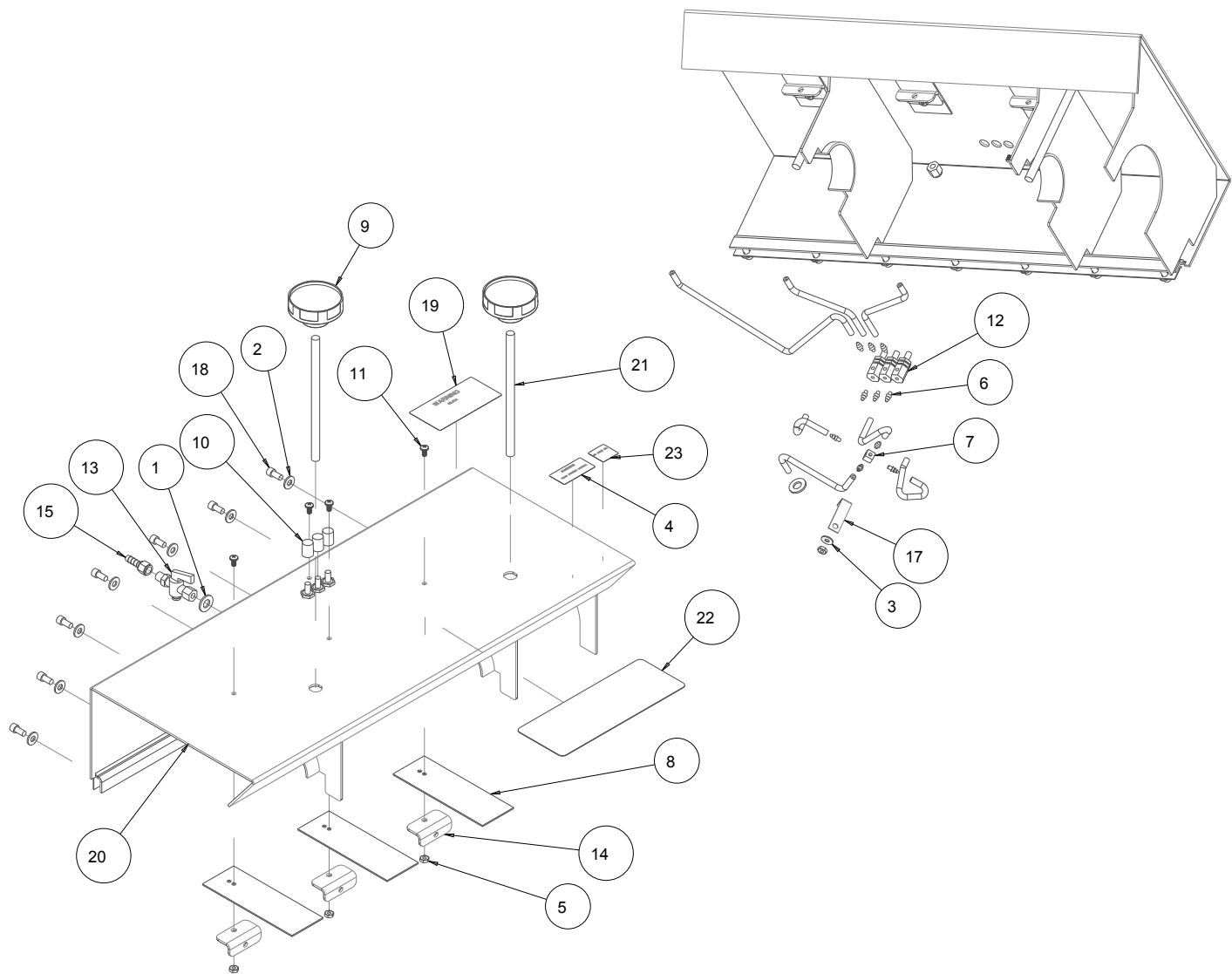
Super Cabmaker GP8 Drawing 1 (Both Models) Part # 168077



Super Cabmaker GP8 Drawing 1 (Both Models) Part # 168077

ITEM	DESCRIPTION	PART #	QTY
1	WASHER, FLAT, SAE, 3/8	150923	4
2	SCREW, SOC HD CAP, 1/4-20 X 1	151049	2
3	SCREW, HEX HD, 5/16-18X1	151743	2
4	WASHER, FLAT, SAE, 5/16	151754	4
5	NUT, HEX, 1/4-20	151893	2
6	WASHER, FLAT, SAE, 1/4	151915	2
7	SCREW, HEX, 3/8-16 X 3/4	153527	4
8	NUT, HEX, NYLK, 5/16-18	158289	2
9	BEARING, 1" W COLLAR, RUBBER	161347	2
10	BRACKET, TOOL REST LH	161442	1
11	NUT, 1-14 LH, THIN HEX	161713	1
12	FITTING, 1/8 MNPT X 3/8 BARB	161991	2
13	COLLAR, 1" SHAFT X 1-1/2"	162310	1
14	BRACKET, TOOL REST RH	166439	1
15	ASSY, POLISH PAD, 8" DOMED, LH	167191	1
16	SHAFT, DRIVE	168076	1
17	TOOL REST	168080	2
18	MOUNTING BASE	168109	1
19	SET, SPACER, GP-8	168114	1
20	SPACER, 0.91, GP8	168114-01	1
21	SPACER, 1.05, GP8	168114-02	1
22	SPACER, 1.11, GP8	168114-03	1
23	SPACER, 4.69, GP8	168114-04	1
24	SPACER, 0.98, GP8	168114-05	1
25	CASTING, TANK, GP-8-COMP	168153	1
26	FLANGE, OUTER, MODIFIED, GP-8	168440	6
27	DRUM, 8X3 RUBBER EXPANDBLE	390008	1
28	WHEEL, 8" BRAZED 80 GRIT	498080	1
29	WHEEL, 8" BRAZED 170 GRIT	498200	1

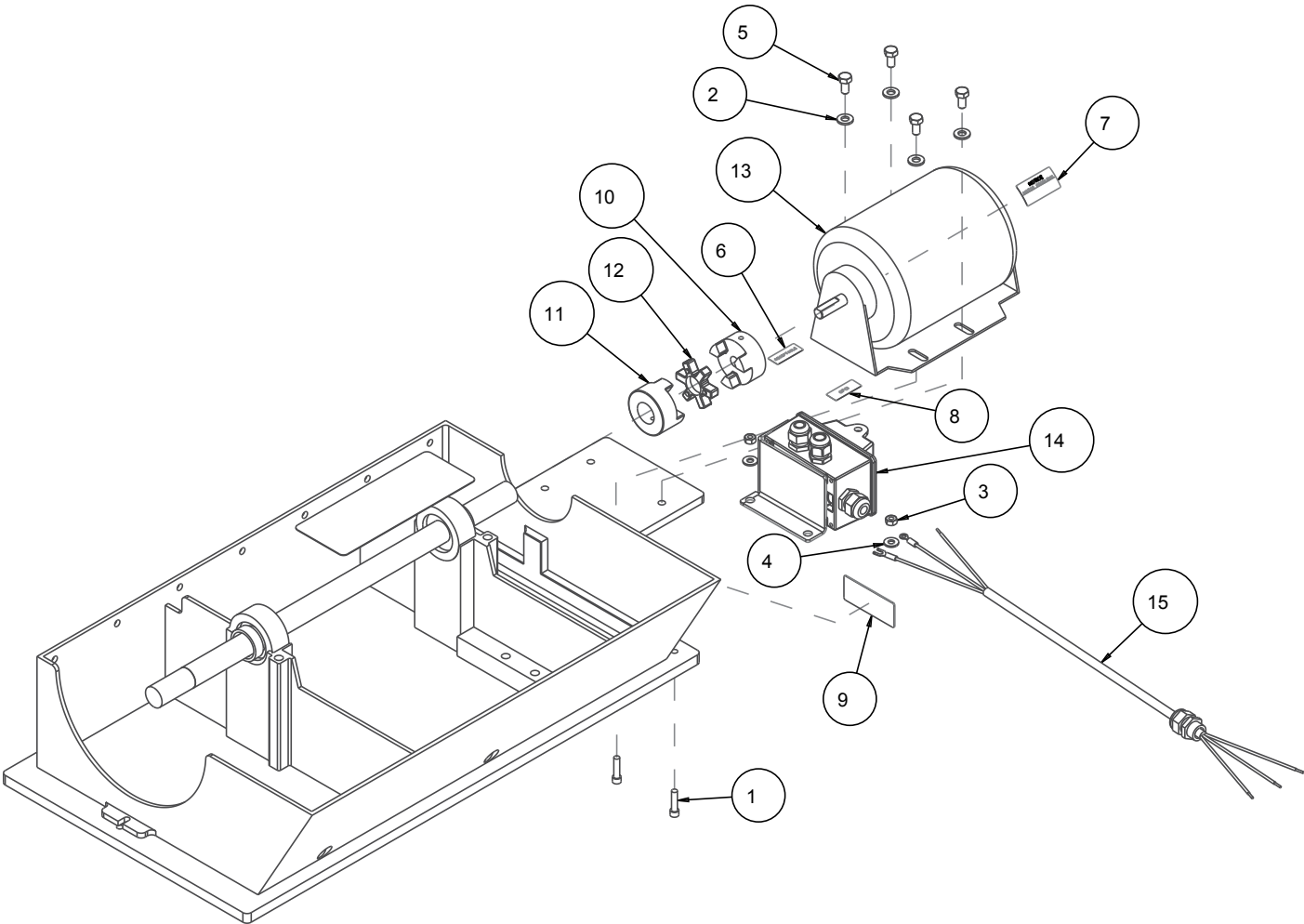
Super Cabmaker GP8 Drawing 2 (Both Models) Part # 168077



Super Cabmaker GP8 Drawing 2 (Both Models) Part # 168077

ITEM	DESCRIPTION	PART #	QTY
1	WASHER, FLAT, SAE, 3/8	150923	2
2	WASHER, FLAT, SAE, 1/4	151915	7
3	WASHER, FLAT, SAE, #10	154369	1
4	LABEL, WARNING, READ MANUAL	154398	1
5	NUT, HEX, 10-32	156269	4
6	BARB FITTING 1/8 NPTF	161343	10
7	CROSS, #10-32	161532	1
8	FLAP, WHEEL	161557	3
9	KNOB, 2-1/2 DIA X 3/8-16	161651	2
10	KNOB, RIDGED, GRAY	161652	3
11	SCREW, PAN HEAD PHILLIPS 10-32 X 3/8"	161875	4
12	VALVE, NV25V-B, 10/32F	161989	3
13	VALVE, 1/8NPTFM X 1/4 TUBE	161992	1
14	BRACKET, HOSE MOUNT	162154	3
15	ADAPTOR, MALE PIPE 1/8 NPTF	162315	1
16	TUBING, CLEAR PVC 1/8 X 1/4 (36")	162505	1
17	CLIP, HOSE RETAINER	162511	1
18	SCREW, 1/4-20 X 1/2 SOCKET HEAD CAP	162778	7
19	LABEL, WARNING, SILICA, PROP 65	164202	1
20	WELDMENT, HOOD	168075	1
21	ROD, THREADED	168082	2
22	BD LOGO LABEL	168448	1
23	LABEL, QR CODE BD MANUALS	171239	1

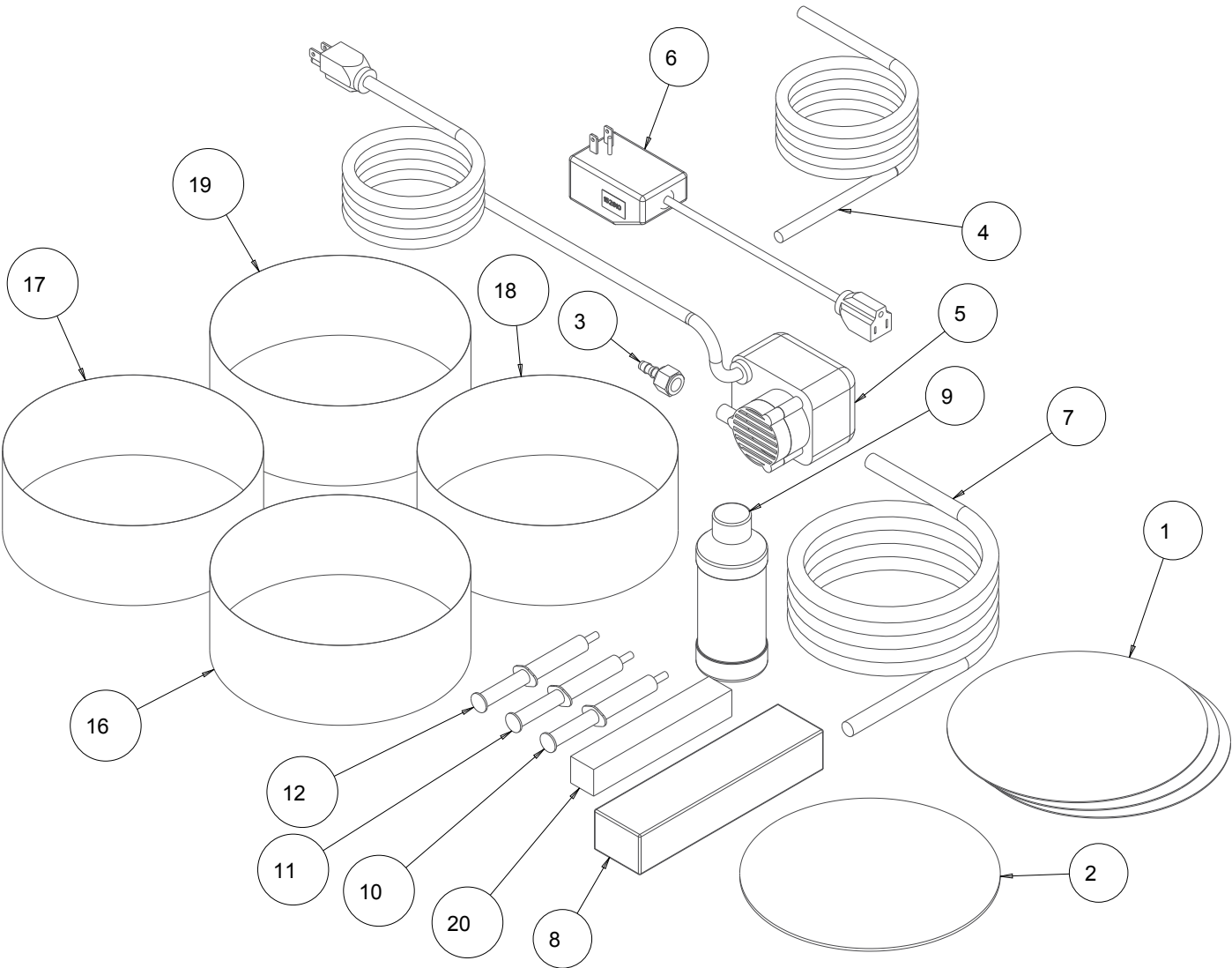
Super Cabmaker GP8 Drawing 2 (Both Models) Part # 168077



Super Cabmaker GP8 Drawing 2 (Both Models) Part # 168077

ITEM	DESCRIPTION	PART #	QTY
1	SCREW, SOC HD CAP, 14-20 X 1	151049	2
2	WASHER, FLAT, SAE, 5/16	151754	4
3	NUT, HEX, 1/4-20	151893	2
4	WASHER, FLAT, SAE, 1/4	151915	2
5	SCREW, 5/16-18 X 5/8 HEX HEAD CAP	153949	4
6	LABEL, CAUTION, RECEPTACLE	154822	1
7	LABEL,NOTICE, MOTOR PROBLEMS	155672	1
8	LABEL, CAUTION, GFCI	155678	1
9	TAG, SERIAL NUMBER, BLANK	157500-RW	1
10	HUB, COUPLING, 1/2"	168179	1
11	HUB, COUPLING, 1"	168180	1
12	COUPLING, SPIDER, L-090	168181	1
13	MOTOR, 1/2 HP	168504	1
14	ASSY, SWITCH BOX, 30A, GP	172836-18	1
15	ASSY, CORD, MOTOR	172839	1

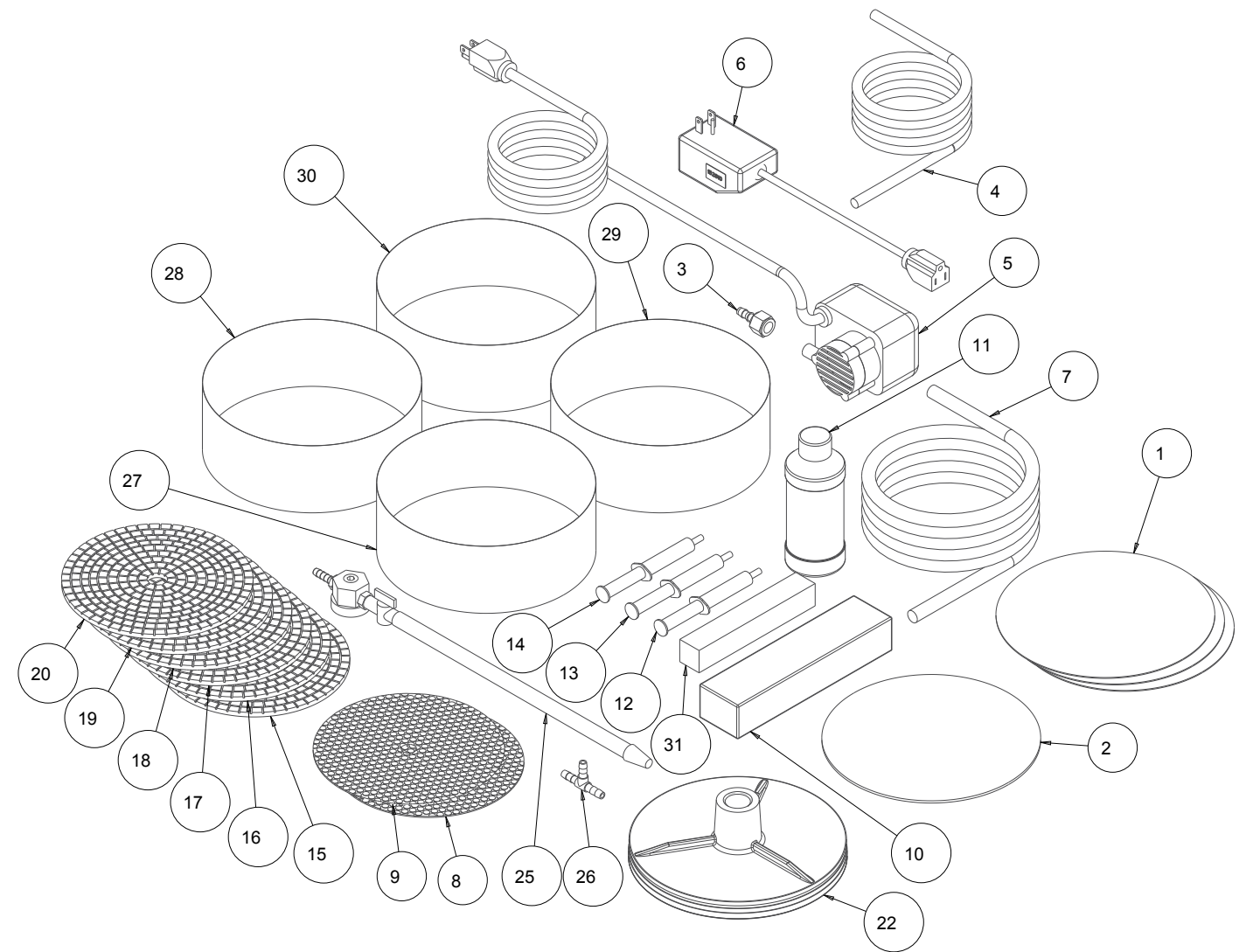
Accessories Part # 168077



Accessories Part # 168077

ITEM	DESCRIPTION	PART #	QTY
1	PAD, POLISHING 8" POLYTEX	1409	3
2	PAD, POLISHING 8", LEATHER	14622	1
3	FITTING, PLASTIC, 1/4 FNPT X 1/4 BARB	128397	1
4	HOSE, VINYL, 1/4X3/8 (6.0')	132951	1
5	PUMP, WATER 115V/60HZ UL/CSA	151271	1
6	CORD, GFCI, 120V 15 AMP	152610	1
7	HOSE, VINYL, 3/8X1/2 (8.0")	156039	1
8	ADHESIVE, 3M DISC, ON-OFF	161323	1
9	OIL, TOOL COOL, 8 OZ	161729	1
10	POLISHING COMPOUND, 01 MICRON	161766	1
11	POLISHING COMPOUND, 02 MICRON	161767	1
12	POLISHING COMPOUND, 2-4 MICRON	161768	1
13	CARTON, 7" DUST SHROUD, PLAIN	166789	1
14	OWNERS MANUAL, GP-8	168687	1
15	CRATE, GP8 HEATREATED	168725	1
16	BELT, 8X3 RESIN 1200 GRIT	398121	1
17	BELT, 8X3 RESIN 3000 GRIT	398300	1
18	BELT, 8X3 RESIN 400 GRIT	398400	1
19	BELT, 8X3 RESIN 600 GRIT	398600	1
20	DRESSING STICK, GREEN	999997	1

Accessories Part # 168077-FPS



Accessories Part # 168077-FPS

ITEM	DESCRIPTION	PART #	QTY
1	PAD, POLISHING 8" POLYTEX	1409	3
2	PAD, POLISHING 8", LEATHER	14622	1
3	FITTING, PLASTIC, 1/4 FNPT X 1/4 BARB	128397	1
4	HOSE, VINYL, 1/4X3/8 (6.0')	132951	1
5	PUMP, WATER 115V/60HZ UL/CSA	151271	1
6	CORD, GFCI, 120V 15 AMP	152610	1
7	HOSE, VINYL, 3/8X1/2 (8.0")	156039	1
8	DISC, ELECTROPLATED 7" 70 GRIT	158545	1
9	DIS, ELECTROPLATED 7" 120 GRIT	158546	1
10	ADHESIVE, 3M DISC, ON-OFF	161323	1
11	OIL, TOOL COOL, 8 OZ	161729	1
12	POLISHING COMPOUND, 01 MICRON	161766	1
13	POLISHING COMPOUND, 02 MICRON	161767	1
14	POLISHING COMPOUND, 2-4 MICRON	161768	1
15	RESIN DISC, 7" 220 GIRT	165255	1
16	RESIN DISC, 7" 400 GIRT	165256	1
17	RESIN DISC, 7" 800 GIRT	165257	1
18	RESIN DISC, 7" 1800 GIRT	165258	1
19	RESIN DISC, 7" 3500 GIRT	165259	1
20	RESIN DISC, 7" 8500 GIRT	165260	1
21	CARTON, 7" DUST SHROUD, PLAIN	166789	1
22	ASSY, POLISHING PAD, 8" FLAT, LH	168646	1
23	OWNERS MANUAL, GP-8	168687	1
24	CRATE, GP8 HEATREATED	168725	1
25	ASSY, LOC-LINE MANIFOLD	170547	1
26	TEE, 1/4 HOSE BARB	170562	1
27	BELT, 8X3 RESIN 1200 GRIT	398121	1
28	BELT, 8X3 RESIN 3000 GRIT	398300	1
29	BELT, 8X3 RESIN 400 GRIT	398400	1
30	BELT, 8X3 RESIN 600 GRIT	398600	1
31	DRESSING STICK, GREEN	999997	1

BARRANCA DIAMOND LIMITED WARRANTY

Barranca Diamond warrants to the original retail purchaser for a period of 90 days except as noted, from the date of purchase all products covered by this Warranty to be free of defects in materials and workmanship.

This Warranty shall not apply to any parts that have been subjected to misuse or improper service, that had been damaged in transit or handling, or that have been altered or repaired by unauthorized representatives. This Warranty does not cover defects caused by or resulting from misuse, abuse, neglect or damage caused by accident or the failure to provide reasonable maintenance. This Warranty is void if the product or any of its individual components is altered or modified by the purchaser or if the product is used in a manner or with a blade not recommended by the manufacturer.

Any claim arising under this Warranty must be submitted by the original purchaser within the warranty period specified above, and shall include proof of purchase. During said warranty period Barranca Diamond shall, at its option, either replace or repair, at no charge to the original purchaser, any parts or components that are found to be defective by Barranca Diamond. Barranca Diamond shall not be responsible for or obligated to pay for freight or other transportation related costs or expenses in connection with any defective products or components that are either returned to Barranca Diamond's facility or any authorized repair station and/or any replacement products or components that are shipped from Barranca Diamond pursuant to this Warranty.

Parts and labor needed to maintain products and the replacement of components due to normal wear and tear are the purchaser's responsibility and are not covered by this Warranty. All products or components replaced under warranty become the property of the manufacturer. All replacement parts will be considered to be part of the original product and any warranty on such parts will expire coincidentally with the original Warranty. Barranca Diamond will pay for parts and labor in connection with warranty repairs conducted by Barranca Diamond or its authorized repair centers. Replacement part(s) installed by anyone else will be provided without a charge for such replacement part(s), but this Warranty will not apply to labor charges in connection therewith.

IN NO EVENT SHALL ANY LIABILITY UNDER THIS WARRANTY EXCEED THE REPLACEMENT COST OF ANY DEFECTIVE PRODUCT OR COMPONENT THEREOF, AND BARRANCA DIAMOND SHALL NOT BE LIABLE FOR ANY INCIDENTAL OR CONSEQUENTIAL DAMAGES OR FOR ANY OTHER DAMAGE OR LOSS NOT EXPRESSLY ASSUMED AS SET FORTH HEREIN.

The foregoing constitutes an expressed warranty on the terms set forth above and is the only warranty or warranties applicable to the products it covers. All other warranties, including, without limitation, the implied warranty of merchantability and/or fitness for a particular purpose or use being denied.

This limited warranty is expressly in lieu of all other warranties, whether expressed or implied.

WARRANTY: For your (1) one year warranty to be effective, complete the online Product Registration as soon as possible. Visit www.mkdiamond.com/registration/

Specifics Applicable to Limited Warranty of Diamond Blades and Core Bits:**Laser Welded Blade and Bit Warranty:**

If the laser weld between the segment and the steel core or barrel fails during normal use, the blade or bit will be replaced free of charge. Blades and bits damaged due to careless or improper use are not covered under this warranty.

Brazed Blade, Bit, and Cup Wheel Warranty:

If the brazed bond between the segment and the core, barrel, or cup fails within the first .050 of segment wear, the blade, bit, or cup will be replaced free of charge. Blades, bits, and cup wheels damaged due to careless or improper use are not covered under this warranty.

Continuous Rim Blade Warranty:

If the bond between the rim and the core fails during normal use, the blade will be replaced free of charge. Blades and bits damaged due to careless or improper use are not covered under this warranty.

Exclusions:

Barranca Diamond does not warrant the following components, which carry their own manufacturer's warranty for the indicated periods:

Electric Motors Manufacturer's Warranty

Baldor: 1 year

Ryobi: 1 Year

Soga: 1 Year

Gas Engines Manufacturer's Warranty

Honda: 2 years

Engine Power Information

Engine power ratings are calculated by the individual engine manufacturer and the rating method may vary among engine manufacturers. Barranca Diamond Products makes no claim, representation or Warranty as to the power rating of the engine on this equipment and disclaims any responsibility or liability of any kind whatsoever with respect to the accuracy or the engine power rating. Users are advised to consult the engine manufacturer's owner's manual and website for specific information regarding the engine power rating.

REPLACEMENT PARTS

Replacement parts for this tool may be ordered from your Barranca Diamond distributor or directly from Barranca Diamond. Please have the following information ready before calling:

- Model and serial number of the machine
- Date of purchase
- Description of parts being ordered (see parts list)

RETURN MATERIALS PROCEDURE

To expedite the service relative to the return of a product purchased through Barranca Diamond, please have the following information available:

- Model and serial number of the machine
- Date of purchase
- Distributor's name

Then please call Barranca Diamond at (310) 523-5867 or toll free at 800-630-7682 to obtain a Return Goods Authorization number (RGA) authorizing the return.

Please Note:

- Ensure your item(s) are prepaid to the destination
- Return items must have been purchased within the previous twelve (12) months
- Follow the packaging instructions in the following section
- Be sure to include the RGA number, return address and your phone number on or within the return shipping box.

PACKAGING INSTRUCTIONS

Ship the equipment using its original shipping crate if possible. Secure inside the shipping crate. Ensure all parts are secured in the packaging to prevent movement. Do not ship the equipment partially exposed.

NOTES

SUPER CABMAKER-GP8 & GP8 W/FPS
OWNER'S MANUAL
& PARTS LIST



BARRANCA DIAMOND

Barranca Diamond Products, Inc.
1315 Storm Parkway
Torrance, CA 90501

Toll-Free: (800) 421-5830
Phone: (310) 539-5221
Fax: (310) 539-5158
www.barrancadiamond.com