



BARRANCA DIAMOND

## BD Drop Saw

### OWNER'S MANUAL & PARTS LIST



Revision 102	01.2022
Manual Part No. 172668-OM	

**Caution:** Read all safety and operating instructions before using this equipment. This manual **MUST** accompany the equipment at all times.

Barranca Diamond Products, Inc.  
1315 Storm Parkway  
Torrance, CA 90501  
Toll-Free: (800) 630-7682  
Phone: (310) 523-5867  
Fax: (310) 257-3063  
[www.barrancadiamond.com](http://www.barrancadiamond.com)

## INTRODUCTION

We at Barranca Diamond Products want to thank you for selecting the Barranca Diamond BD Drop Saw (part # 172668). We are certain that you will be pleased with your purchase. Barranca Diamond takes pride in producing top quality and dependable products for both hobbyists and commercial lapidary users throughout the world.

Operated correctly, your BD Drop Saw should provide you with years of quality service. In order to help you, we have included this owner's manual. This owner's manual contains information necessary to operate and maintain your BD Drop Saw safely and correctly. Please take the time to familiarize yourself with the BD Drop Saw by reading and understanding this manual.

If you should have questions concerning your BD Drop Saw, please feel free to call Barranca Diamond at (310) 523-5867 or toll free (800) 630-7682.

### NOTE THIS INFORMATION FOR FUTURE USE:

<b>MODEL NUMBER:</b>	
<b>SERIAL NUMBER:</b>	
<b>PURCHASE PLACE:</b>	
<b>PURCHASE DATE:</b>	

**WARRANTY:** For your (1) one year warranty to be effective, complete the online Product Registration as soon as possible. Visit [www.mkdiamond.com/registration/](http://www.mkdiamond.com/registration/)

## TABLE OF CONTENT

### **SAFETY**

Safety Precautions	4-7
California Proposition 65 Warning	7
Electrical Requirements & Grounding Instructions	8-9
Safety Labels	10
Product Specifications	11

### **OPERATION, ADJUSTMENT & MAINTENANCE**

Assembly	12-14
Operation	15

### **EXPLODED VIEW AND PART LIST**

Exploded View & Parts List	17-22
----------------------------	-------

### **WARRANTY, RETURN, & CUSTOMER SERVICE**

Warranty	25
Return & Customer Service	26-27

**SAFETY PRECAUTIONS**

Read and follow all safety, operating and maintenance instructions. Failure to read and follow these instructions could result in injury or death to you or others. Failure to read and follow these instructions could also result in damage and/or reduced equipment life. In order to prevent injury, the following safety precautions should be followed at all times!

**READ OWNER'S MANUAL BEFORE USE**

Before using this equipment, ensure that the person operating this machine has read and understands all of the instructions in the manual. Precaution is the best insurance against accidents. Read and understand all safety precautions, messages, warnings and hazard symbols. You are responsible for your own safety.

**ALWAYS USE SAFETY GLASSES**

Safety glasses should always be worn when working around power tools. In addition, a face, dust mask or respirator should be worn if a cutting operation is dusty. Everyday eyeglasses only have impact resistant lenses and may not prevent eye injury - they are **NOT** safety glasses.

**USE PROPER APPAREL**

Do not wear loose clothing, gloves, neckties, rings, bracelets or other jewelry that may be caught in moving parts. Non-slip footwear is recommended. Wear protective hair covering to contain long hair. Hand protection (plastic gloves) and a shop bib are recommended during sawing to prevent stains to clothing. Avoid prolonged exposure of skin to the sawing lubricant and wash skin immediately after contact. Do not touch the work material until the motor is off and the machine has come to a complete stop.

**ALWAYS USE HEARING PROTECTION**

To reduce the possibility of hearing loss, always use hearing protection when operating power equipment.

**KEEP GUARDS IN PLACE**

In order to prevent injury, never operate the saw without the guards in place!

**REMOVE ADJUSTING KEYS AND WRENCHES**

Form a habit of checking to see that keys and adjusting wrenches are removed from the power tool before it is turned on.

**ELECTRICAL SHOCK**

Never touch electrical wires or motor components while the motor is running. Exposed, frayed or worn electrical wiring and plugs can be sources of electrical shock that could cause severe injury or burns.

**DISCONNECT TOOLS**

Power tools should always be disconnected before servicing or when changing accessories, such as blades, bits, cutters and the like.

**REDUCE THE RISK OF UNINTENTIONAL STARTS**

Make sure the ON/OFF switch is in the OFF position before plugging in a power tool.

**ROTATING OR MOVING PARTS**

Keep hands, feet, hair, and clothing away from all moving parts to prevent injury. Never operate the motor with covers, shrouds or guards removed.

**MAINTAIN TOOLS WITH CARE**

Keep tools clean for the best and safest performance. Always follow maintenance instructions for lubricating and when changing accessories.

**KEEP WORK AREA CLEAN**

Cluttered work areas and benches invite accidents.

**DO NOT USE IN DANGEROUS OR HAZARDOUS ENVIRONMENTS**

Do not operate equipment in dangerous or hazardous environments. Do not use power tools in damp or wet locations nor expose them to rain. Always keep the work area well lighted. Always work in a well ventilated area.

**KEEP CHILDREN AWAY**

All visitors and children should be kept a safe distance from the work area. Keep power cords disconnected when tool is not in use.

**MAKE THE WORKSHOP KID-PROOF**

Make the workshops kid-proof by using padlocks, master switches and by disconnecting all power cords.

**USE THE RIGHT TOOL**

Do not force a tool or an attachment to do a job that it was not designed to do.

**SECURE WORK**

Clamps or a vise should be used to hold work whenever practical. Keeping your hands free to operate a power tool is safer.

**DO NOT FORCE THE TOOL**

A power tool will do a better job and operate more safely at the feed rate for which it was designed.

**USE THE RIGHT TOOL TO SERVICE THE SAW**

Do not force a tool or an attachment when servicing or operating this power tool. Use the correct tools for service or adjustments.

**DO NOT OVERREACH**

Keep proper footing and balance at all times by not overreaching.

**DO NOT OPERATE A TOOL WHEN TIRED**

When tired, take a break and relax.

**DIRECTION OF FEED**

All blades, grinding wheels or polishing belts should always be installed such that rotation is in the direction of the arrow imprinted on the blade, wheel or belt.

**ONLY OPERATE AT THE PROPER SPEED**

Severe personal injury and damage to the motor or equipment can result if operated at speeds above maximum.

**NEVER LEAVE A TOOL RUNNING UNATTENDED – TURN POWER OFF**

Do not leave a tool until it comes to a complete stop. Always turn the tool off, and disconnect the power cord to its source, when leaving the work area or when work is finished. Do not leave extension cords attached to the power cord or power receptacle (wall outlet) when leaving the work area.

**CHECK FOR DAMAGED OR WORN PARTS**

Before using a power tool, check for damaged parts. A guard or any other part that is damaged should be carefully checked to determine if it would operate properly and perform its intended function. Always check moving parts for proper alignment or binding. Check for broken parts and mountings and all other conditions that may affect the operation of the power tool. A guard, or any damaged part, should be properly repaired or replaced.

**USE RECOMMENDED ACCESSORIES AND PARTS**

Consult the owner's manual for recommended accessories and parts. Using improper parts and accessories may increase the risk of personal and/or bystander injury.

**USE THE PROPER EXTENSION CORD**

If using an extension cord, make sure it is in good condition first. When using an extension cord, be sure to use one heavy enough to carry the current your product will draw. An undersized cord will cause a drop in line voltage that will result in a loss of power and overheating. The table on page 8, shows the correct AWG (American Wire Gauge) size to use depending on cord length and nameplate ampere rating. If in doubt, use the next heavier gauge. The smaller the gauge number, the heavier the cord.

**USE THE PROPER POWER SOURCE**

This tool is only to be used with a 120 volt 60 HZ power source. Ensure power source is at least 15 amps and 110 to 120 volts. Low voltage current can adversely effect electric motor performance and overall life.

**USE THE RECOMMENDED COOLING AND LUBRICATING FLUIDS**

Never operate a tool dry that requires coolant or lubricant. This can lead to shortened tool life, tool damage and personal injury.

**MAINTAIN TOOLS**

Keep the diamond blade sharp, the sawing lubricant clean and reservoir filled to the correct level for the best and safest performance. Always follow the maintenance instructions for sharpening the blade, lubricating and servicing the saw.

**SILICA DUST WARNING**

---

Grinding/cutting/drilling of masonry, concrete, metal and other materials with silica in their composition may give off dust or mists containing crystalline silica. Silica is a basic component of sand, quartz, brick clay, granite and numerous other minerals and rocks. Repeated and/or substantial inhalation of airborne crystalline silica can cause serious or fatal respiratory diseases, including silicosis. In addition, California and some other authorities have listed respirable crystalline silica as a substance known to cause cancer. When cutting such materials, always follow respiratory precautions.

Use appropriate NIOSH-approved respiratory protection where dust hazard may occur. Paper masks or surgical masks without a NIOSH approval number are not recommended because they do little to protect the worker. For more information about respirator programs, including what respirators have received NIOSH approval as safe and effective, please visit the NIOSH website at:  
<http://www.cdc.gov/niosh/topics/respirators>

Observe OSHA regulations for respirator use (29 C.F.R. §1910.134 and §1503.1).  
Visit <http://www.osha.gov> for more information.

**CALIFORNIA PROPOSITION 65 MESSAGE**

---

Some dust created by power sanding, sawing, grinding, drilling, and other construction activities contain chemicals known (to the State of California) to cause cancer, birth defects or other reproductive harm. Some examples of these chemicals are:

- Lead, from lead-based paints
- Crystalline silica, from bricks and cement and other masonry products
- Arsenic and chromium, from chemically treated lumber

For further information, consult the following sources:  
<http://www.osha.gov/dsg/topics/silicacrystalline/index.html>  
<http://www.cdc.gov/niosh/docs/96-112/>  
<http://oehha.ca.gov/prop65/law/P65law72003.html>  
<http://www.dir.ca.gov/Title8/sub4.html>  
<http://www.P65warnings.ca.gov>

Your risk from these exposures varies depending on how often you do this type of work. To reduce your exposure to these chemicals, work in a well-ventilated area, and work with approved safety equipment, such as dust masks that are specially designed to filter out microscopic particles. Where use of a dust extraction device is possible, it should be used. To achieve a high level of dust collection, use an industrial HEPA vacuum cleaner. Observe OSHA 29 CFR part 1926.57 and 1926.103.

## ELECTRICAL REQUIREMENTS AND GROUNDING INSTRUCTIONS

In order to prevent potential electrical shock and injury, the following electrical safety precautions and symbols should be followed at all times!

In case of a malfunction or breakdown, grounding provides a path of least resistance for electric current to reduce the risk of electric shock. This tool is equipped with an electric cord having an equipment-grounding conductor and a grounding plug. The plug must be plugged into a matching outlet that is properly installed and grounded in accordance with all local codes and ordinances.

- Do not modify the plug provided – if it will not fit the outlet; have the proper outlet installed by a qualified electrician.
- Improper connections of the equipment-grounding conductor can result in a risk of electric shock. The equipment-grounding conductor is the wire that has a green outer surface, with or without yellow stripes. If repair or replacement of the electric cord or plug is necessary, do not connect the equipment-grounding conductor to a live terminal.
- Check with a qualified electrician or service personnel if the grounding instructions are not completely understood, or if in doubt as to whether the tool is properly grounded.
- Use only 3-wire extension cords that have 3-prong grounding plugs and 3-pole receptacles that accept the tool's plug.
- Repair or replace a damaged or worn cord immediately.

This tool is intended for use on a circuit that has an outlet that looks like the one shown in Sketch A of (Figure 1). The tool has a grounding plug that looks like the plug illustrated in Figure 1. A temporary adapter, which looks like the adapter illustrated in sketches B and C, may be used to connect this plug to a 2-pole receptacle as shown in Sketch B, if a properly grounded outlet is not available. The temporary adapter should be used only until a properly grounded outlet can be installed by a qualified electrician. The green-colored rigid ear, plug, and the like, extending from the adapter, must be connected to a permanent ground such as a properly grounded outlet box.

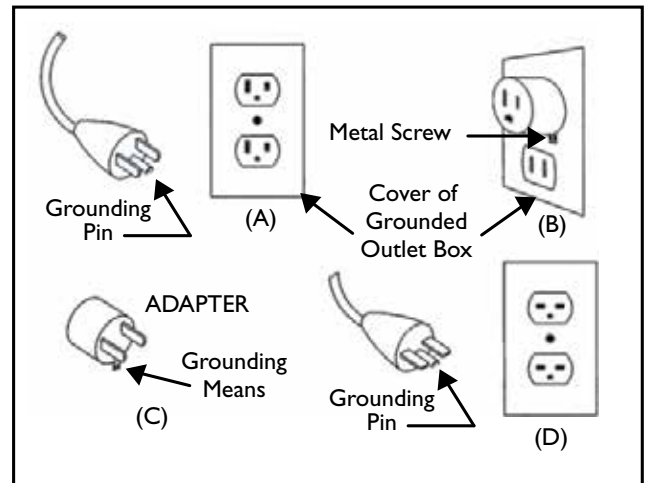


Figure 1

**NOTE:** Use of a temporary adapter is not permitted in Canada.

To reduce the risk of electrocution, keep all connections dry and off the ground.

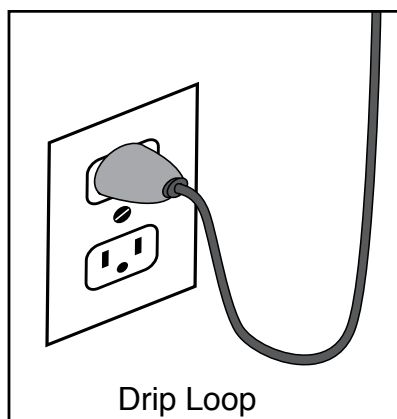
A Ground Fault Circuit Interrupter (GFCI) should be provided on the circuit(s) or outlet(s) to be used for this machine. Receptacles are available, having built-in GFCI protection, and may be used for this measure of safety.



### ELECTRICAL REQUIREMENTS AND GROUNDING INSTRUCTIONS

To avoid the possibility of the appliance plug or receptacle getting wet, position the tool to one side of a wall mounted receptacle. This will prevent water from dripping onto the receptacle or plug. A "drip loop," shown in illustration below, should be arranged by the user to properly position the power cord relative to the power source.

The "drip loop" is the part of the cord below the level of the receptacle, or the connector, if an extension cord is used. This method of positioning the cord prevents the travel of water along the power cord and coming in contact with the receptacle.



If the plug or receptacle gets wet, DO NOT unplug the cord. Disconnect the fuse or circuit breaker that supplies power to the tool. Then unplug and examine for presence of water in the receptacle.

Use only extension cords that are intended for outdoor use. These extension cords are identified by a marking "Acceptable for use with outdoor appliances; store indoors while not in use." Use only extension cords having an electrical rating not less than the rating of the product. Do not use damaged extension cords. Examine extension cords before using and replace if damaged. Do not abuse extension cords and do not yank on any cord to disconnect. Keep cords away from heat and sharp edges. Always disconnect the extension cord from the receptacle before disconnecting the product from the extension cord.

To reduce the risk of electrocution, keep all connections dry and off the ground. Don't touch the plug with wet hands.

Use of undersized extension cords will result in low voltage to the motor that can result in motor burnout and premature failure. Barranca Diamond warns that equipment returned to us showing signs of being run in a low voltage condition, through the use of undersized extension cords, will be repaired or replaced totally at the customer's expense. There will be no warranty claim.

To choose the proper extension cord:

- Locate the length of extension cord needed in table below.
- Once the proper length is found, move down the column to obtain the correct AWG size required for that length of extension cord.

MOTOR SPECS			EXTENSION CORD LENGTH			
Motor	Voltage	Amps	25'	50'	100'	200'
169745	115V 1 Ph	4.4	18 ga	16 ga	12 ga	10 ga

## OPERATION & SAFETY DECALS

Safety labels contain important safety information. Please read the information contained on each safety label. These labels are considered a permanent part of your saw. If a label comes off or becomes hard to read, contact Barranca Diamond or your dealer for a replacement.



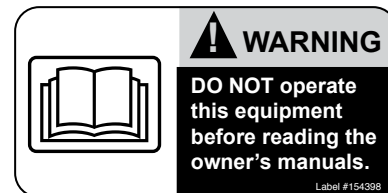
Part # 164202

**A**

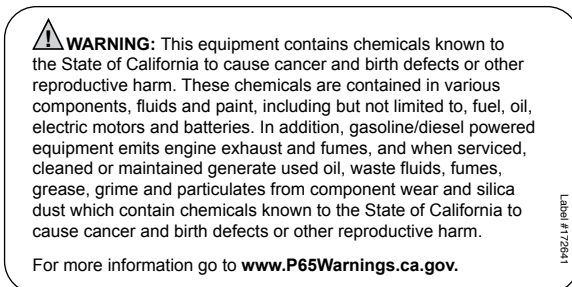
Part # 155587

**B**

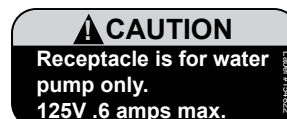
Part # 171239

**C**

Part # 154398

**D**

Part # 172641

**E**

Part # 154822

**F**

Part # 155678

**G**

Decal	Location	Description
A	Motor	Warning - Dust Control
B	Blade Guard	Caution - Guards in Place
C	Motor	QR Code for Manuals & Safety Information
D	Motor	Warning - Read Manual
E	Motor	Warning - Silica Prop 65
F	Motor	Caution - Receptacle
G	Motor	Caution - Use with GFCI only

**PRODUCT SPECIFICATION**

<b>Motor</b>	ABB Baldor
<b>Horse Power</b>	1/2 Hp
<b>Voltage*</b>	115V/60Hz
<b>Amperage</b>	4.7
<b>Motor RPM</b>	1,725
<b>Blade Flange</b>	2-3/8"
<b>Blade Capacity</b>	10"
<b>Arbor</b>	5/8"
<b>Depth of Cut</b>	3-1/2"
<b>Max. Vise Opening</b>	5"
<b>L x W x H (in)</b>	21" x 17-1/2" x 19"
<b>L x W x H (mm)</b>	533 x 445 x 483 mm
<b>Saw Weight</b>	71 lbs.
<b>Part #</b>	172668

**BD Drop Saw**

The BD Drop Saw will manually cut specimens up to 4" (102 mm) in height and has a 17-1/4" (438 mm) x 15-3/4" (400 mm) tabletop.

**UNPACKING**

The BD Drop Saw has been carefully packaged for protection during transit from the factory to your location.

If any components are missing or damaged, save the packing list and materials and advise Barranca Diamond and the carrier of any discrepancies.



**WARNING** Equipment Damage: The 10-inch BD Drop Saw weighs approximately 71 lbs. (132 kg). Follow safe practices to lift the unit from the shipping carton. Improper lifting can result in machine damage, or personal injury.

The BD Drop Saw has been shipped from the factory thoroughly inspected and tested. Select a location for your saw that provides an adequate working space and a power source.

1. Remove the crating material from the baseboard and around the saw with screwdrivers and utility knife.

**WATER PUMP INSTALLATION**

(A)

Press one end of the water tube onto the water pump discharge fitting.



(B)

Remove cutting table and place water pump in water tank.



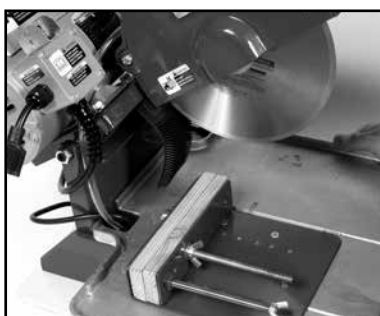
(C)

Ensure drain plug is tightly fitted.



(D)

Fill water tank with clean water until water pump is covered with 1-2" of water.



(E)

Install cutting table.



(F)

Ensure pump cord and water tube exit through the slot in the rear of the cutting table.



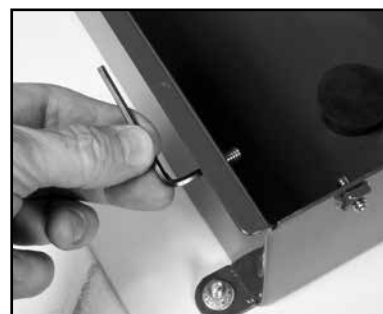
(G)

Connect the water pump power cord to the connection found on the motor.



(H)

There are two set screws on the front of the water tank that secure the cutting table to the water tank.

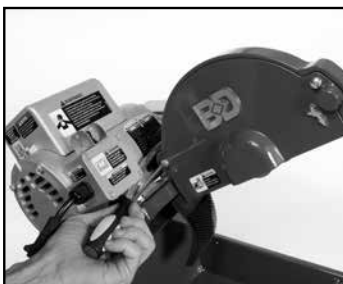


(I)

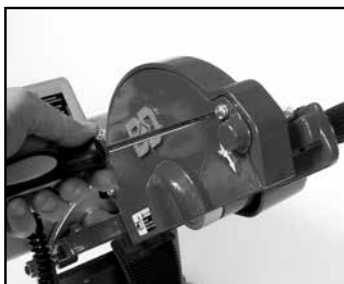
There are two set screws on either side of the water tank that can be used for cutting table alignment or securing the cutting table to the water tank if needed.

**NOTICE:**

Be sure to check the water level inside the reservoir frequently to ensure water pump is covered with water at all times.

**BLADE INSTALLATION**

(A)  
Loosen the blade guard rear bolt.



(B)  
Loosen the blade guard front bolt.



(C)  
Remove blade guard.



(D)  
Remove the retaining nut.



(E)  
Remove the outer flange.



(F)  
Locate the inner flange wrench retaining holes.



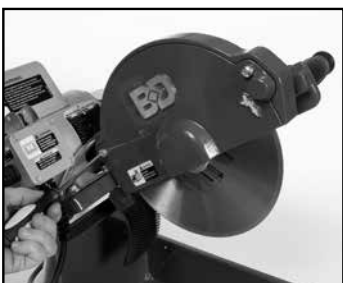
(G)  
Install diamond blade. Verify the blade is seated on the blade shaft.



(H)  
Install outer flange. Ensure the diamond blade rotational arrow matches the direction of the blade guard arrow.



(I)  
Tighten retaining nut.

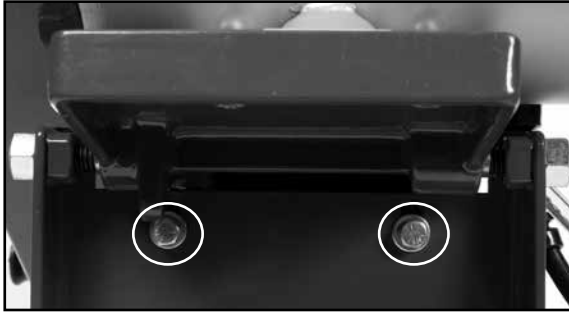


(J)  
Replace blade guard and tighten front and rear

**CAUTION:**

Diamond Blades improperly used are dangerous. Comply with American National Standards Institute Safety Code, B7.1 and, Occupational Safety and Health Act covering Speed, Safety Guards, Flanges, Mounting Procedures, General Operating Rules, Handling, Storage and General Machine Conditions.

## CUTTING HEAD ADJUSTMENTS



(A)

Two bolts are located under motor mount plate to adjust stop plate for cutting head stop height.



(B)

Pivot adjustment bolts are located on either side of cutting head vertical support for adjustments or motor removal.

## BD DROP SAW SETUP FOR OPERATION



### CAUTION

1. Check for damaged, broken, or missing parts.
2. Verify the On/Off switch is in the OFF position.
3. Before connecting the MK-660 Saw to a power supply, be sure the voltage, cycle and phase of the job site power source meet the requirements of the table below:

VOLTAGE:	120v
CYCLE:	60hz
PHASE:	1-phase

4. If using an extension power cord, make sure the length and wire gauge correspond to the requirements listed in the table on page 8. An extension power cord that is too small in wire gauge (diameter), or too long in length, will cause the motor to overheat and could cause premature failure.
5. Use an approved Ground Fault Circuit Interrupter (GFCI).
6. Do not cover the motor vents as this could lead to motor overheating.

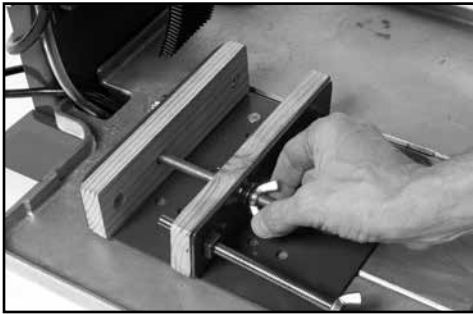
**NOTE:** In order to avoid breaker tripping, a 20-amp circuit breaker should be used.



- (A) Ensure the ON/OFF Switch is in the OFF position
- (B) Plug BD Drop Saw into the GFCI
- (C) Plug the GFCI into the power source

**NOTE:** Barranca Diamond has available, as an accessory item, (Part # 152610) a plug-in GFCI that may be plugged into a properly installed and grounded 3-pole outlet.



**VICE**

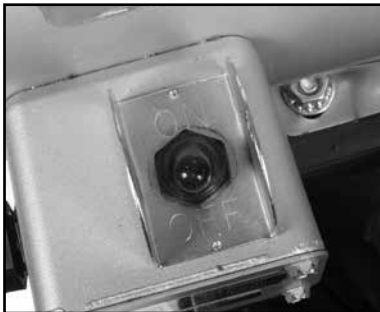
(A)  
Loosen wing nut until vise is  
opened enough for material.



(B)  
With material in vise, tighten wing  
nuts until front and back jaws are  
tightly securing material.

**OPERATION**

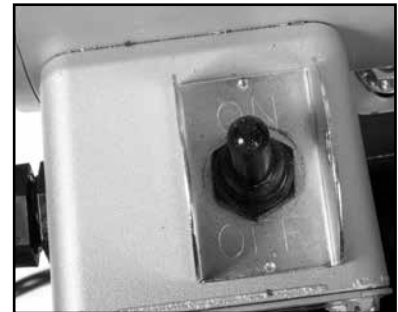
Inspect saw for any damage, verify electric cords are not crack or damaged. Check blade for damage. Verify saw is on a flat, solid surface.



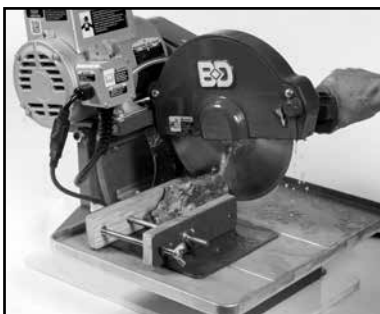
(A)  
Check the power switch is in  
the OFF position.



(B)  
Plug-in the power cord  
using a GFCI.



(C)  
Turn saw ON.



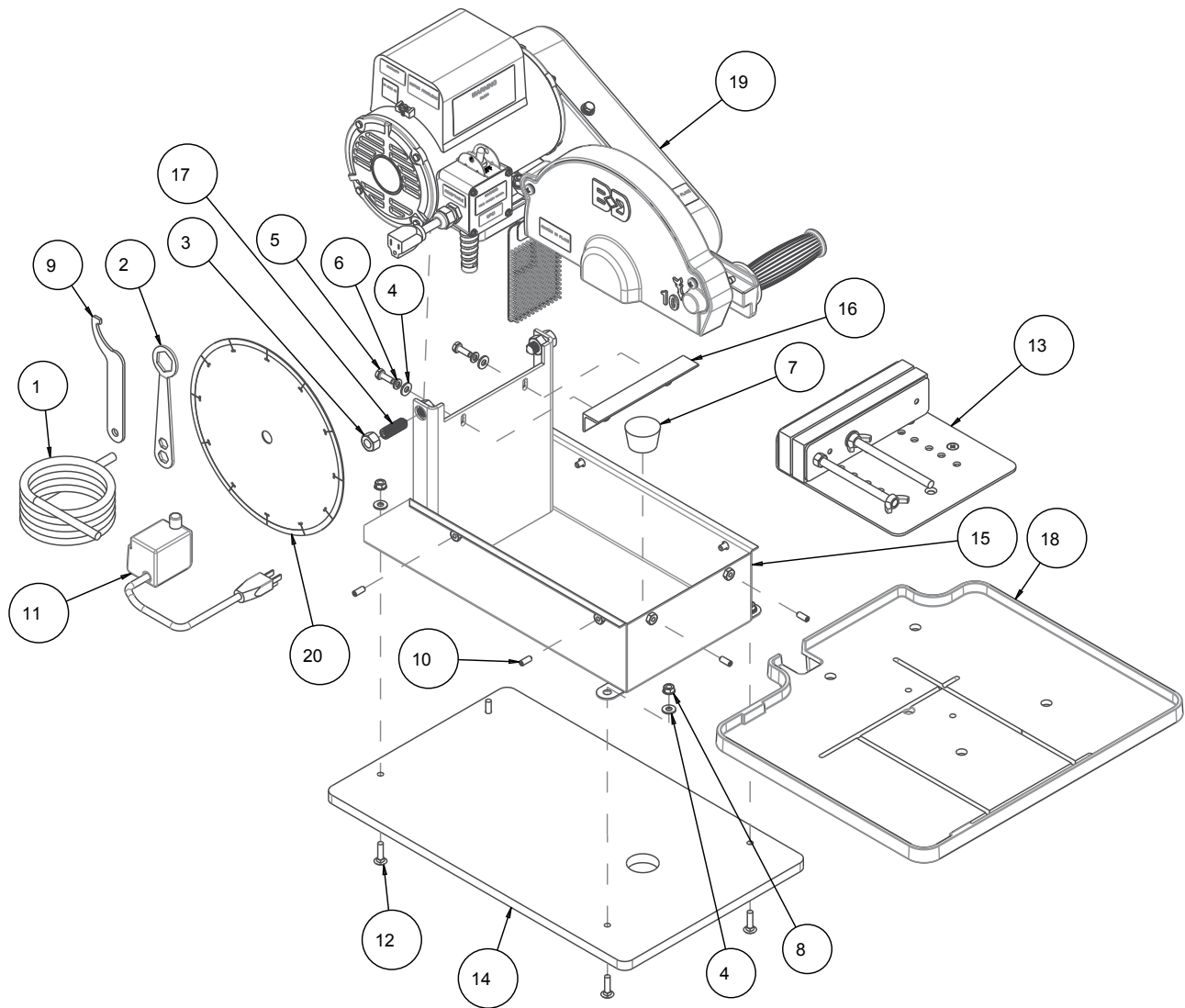
(D)  
Verify proper water flow on both  
sides of the blade. Lower the cut-  
ting head. Perform the cut. Do not  
force the saw.



(E)  
Turn saw OFF immediately  
after finishing cutting.

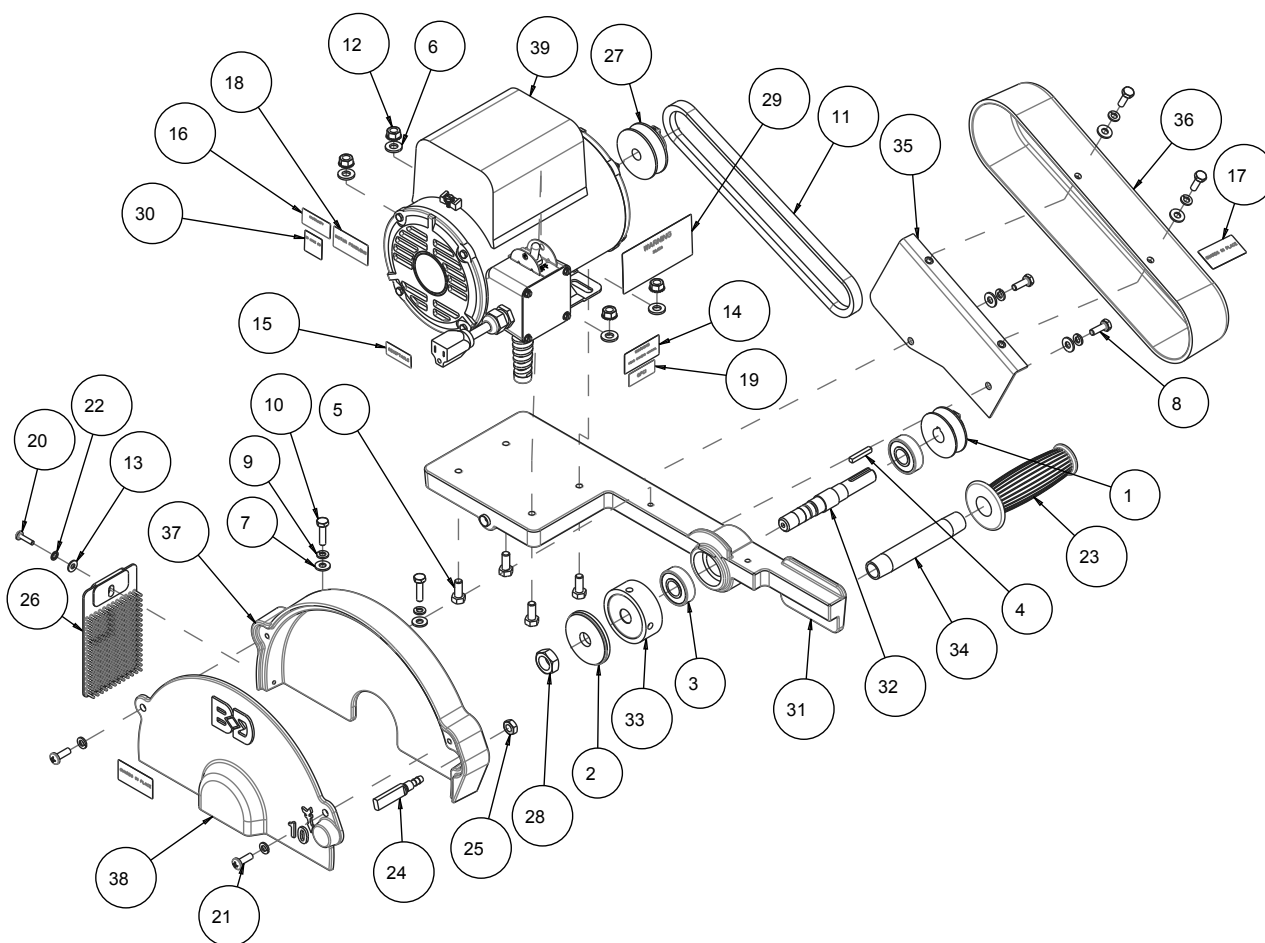
## NOTES



**BD-DROP SAW ASSY, DROP SAW P/N 172668**

**BD-DROP SAW ASSY, DROP SAW P/N 172668**

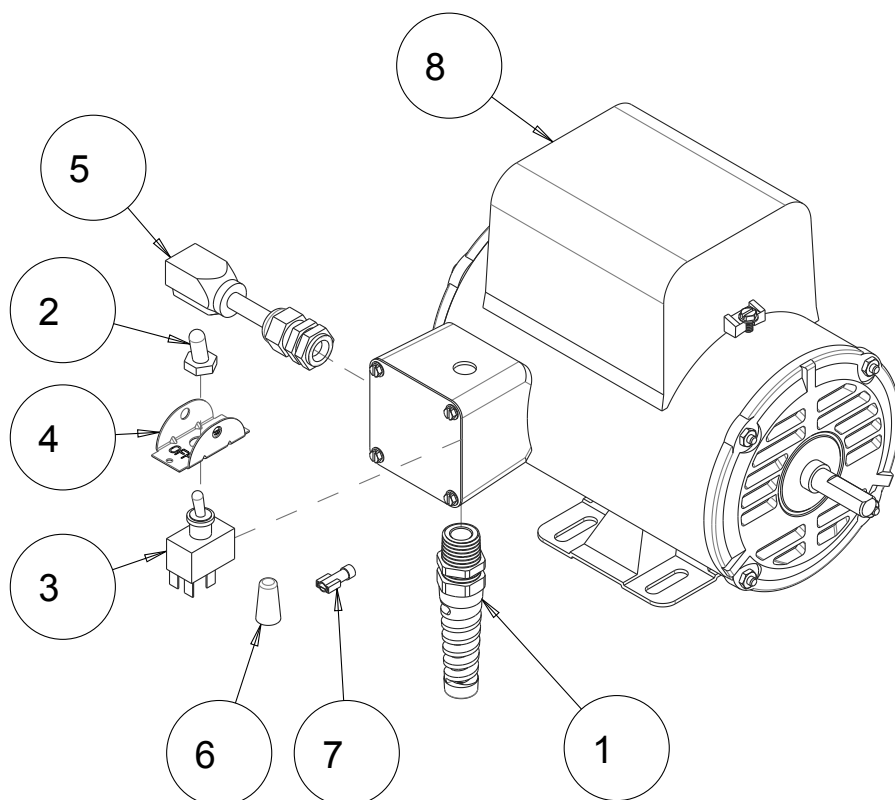
ITEM	DESCRIPTION	P/N	QTY.
1	HOSE, VINYL. 1/4X3/8 (3.0')	132951	1
2	WRENCH, TILE SAW NUT 15/16	134684	1
3	NUT, HEX, 1/2-13	151282	2
4	WASHER, FLAT, SAE, 1/4	151915	6
5	SCREW, HEX HD, 1/4-20X3/4	152370	2
6	WASHER, LOCK, SPLIT, 1/4	152591	2
7	PLUG, RBBR DRAIN W/O HOLE	153439-NL	1
8	NUT, HEX, TW, 1/4-20	153941	4
9	WRENCH, SPANNER	154362	1
10	SCREW, SET, 1/4-20 X 5/8	154575	6
11	PUMP, WATER 115V, 60HZ	155987-VP	1
12	SCREW, CARRIAGE 1/4-20 X 1"	161434	4
13	BD-2014, ROCK VISE	162523	1
14	BOARD, BASE, DROPSAW, COMP	172669	1
15	FRAME, DROPSAW	172670	1
16	BAR, HEAD STOP, DROPSAW	172671	1
17	SCREW, SET, CONE PT, 1/2-13 X 1-1-1/2	172672	2
18	TABLE, DROPSAW, COMP	172674	1
19	ASSY, CUTTING HEAD, DROPSAW	172675	1
20	BD-305 10X050X5/8 AGATE KUTTER	305100	1

**ASSY, CUTTING HEAD P/N 172675**

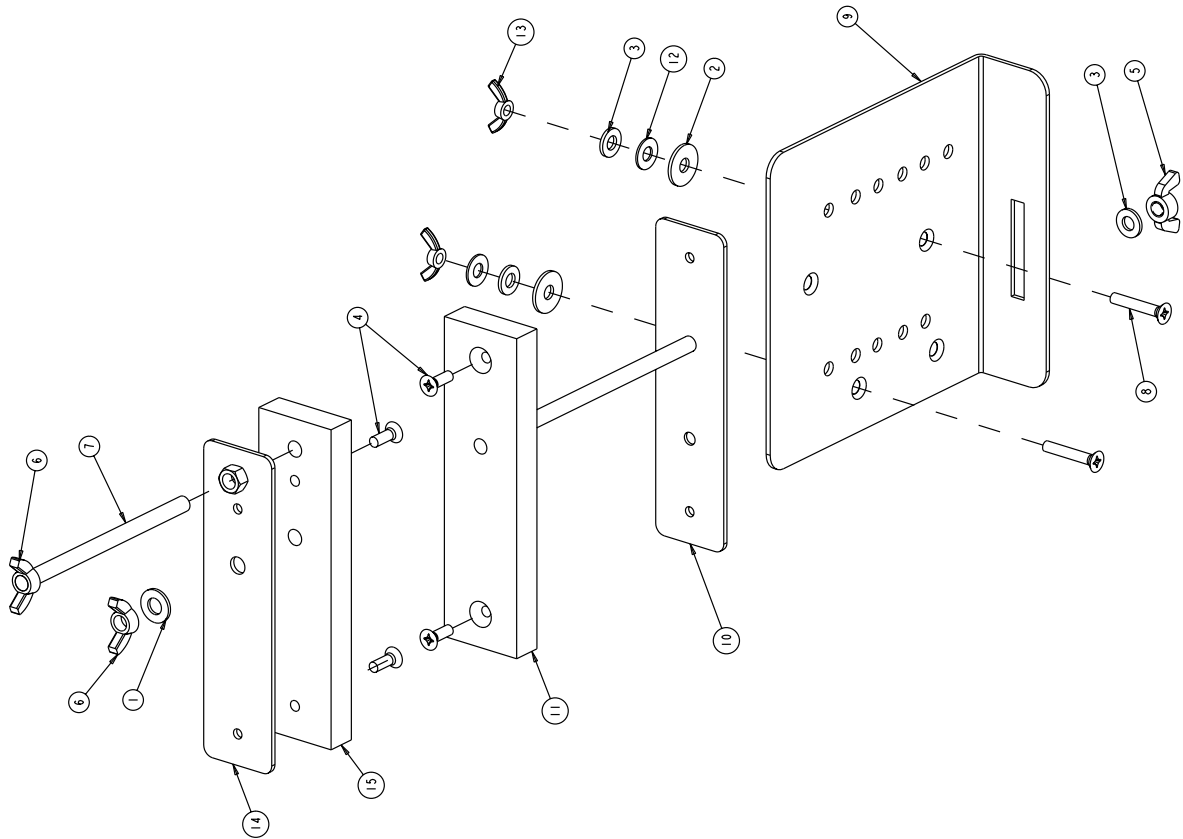
ITEM	DESCRIPTION	P/N	QTY.
1	PULLEY, 1A20- X 5/8 BORE	134676	1
2	FLANGE, OUTER, 2-3/8	135860	1
3	BEARING, BALL, 17X40X12MM	137711	2
4	KEY, 3/16 SQ X 1-1/8	150344	1
5	SCREW, HEX HD, CAP, 5/16-18 X 3/4	151369	4
6	WASHER, FLAT, SAE, 5/16	151754	4
7	WASHER, FLAT, SEA, 1/4	151915	6
8	SCREW, HEX HD, 1/4-20X3/4	152370	4
9	WASHER, LOCK, SPLIT, 1/4	152591	8
10	SCREW, HEX HD, TAP, 1/4-20X1	152676	2
11	BELT, AX-24	153212	1
12	NUT, HEX, TW, 5/16-18	153942	4

**ASSY, CUTTING HEAD P/N 172675**

ITEM	DESCRIPTION	P/N	QTY.
13	WASHER, FLAT, SAE, #10	154369	1
14	LABEL, WARNING, READ MANUAL	154398	1
15	LABEL, CAUTION, RECEPTACLE	154822	1
16	LABEL, INFORMATION ON SERVICE	155038	1
17	LABEL, CAUTION, GUARDS IN PLACE	155587	2
18	LABEL, NOTICE, MOTOR PROBLEMS	155672	1
19	LABEL, CAUTION, GFCI	155678	1
20	SCREW, PAN HD PHIL MS 10-24X3/4	156641	1
21	SCREW, PAN HD, 1/4-20 X 3/4	157523	2
22	WASHER, LOCK, IT, #10	158336	1
23	GRIP, HANDLE 7/8 ID	158608	1
24	MANIFOLD, WATER	159854	1
25	NUT, 3/8-16 HEX	159863	1
26	GUARD, SPLASH	160310	1
27	PULLEY, 2 X 1/2 BORE	161070	1
28	NUT, 5/8-18 LH HEX JAM	161704	1
29	LABEL, WARNING, SILICA, PROP 65	164202	1
30	LABEL, QR CODE BD MANUALS	171239	1
31	CUTTING, HEAD, DROPSAW, COMP	172677	1
32	SHAFT, BLADE, DROPSAW	172679	1
33	FLANGE, INNER, DROPSAW	172680	1
34	NIPPLE, 1/2 NPT X 5"L	172681	1
35	BRACKET, BELT GUARD, INNER, DROPSAW	172682	1
36	GUARD, BELT, OUTER, DROPSAW, COMP	172684	1
37	GUARD, BLADE, INNER, DROPSAW, COMP	172686	1
38	GUARD, BLADE, OUTER, DROPSAW, COMP	172688	1
39	MOTOR, 1/2HP, 115/230V, 1725RPM, EL11209, COMP	172708	1

**ASSY, MOTOR P/N 172708**

ITEM	DESCRIPTION	P/N	QTY.
1	CORD, POWER, 14/3 115V	153419	1
2	COVER, SWITCH	154301	1
3	SWITCH, TOGGLE 125V 20A	154310	1
4	PLATE, TOGGLE SWITCH LOCKOUT	158211	1
5	PUMP CORD	159909	1
6	WIRE NUT 4#16 (YELLOW)	159968	1
7	TERMINAL, 12-10 X .25 QD F FI	161297	1
8	MOTOR, 1/2HP, 115/230V, 1725RPM, EL11209, RAW	172707	1

**ASSY, ROCK VISE P/N 162523**

ITEM	DESCRIPTION	P/N	QTY.
1	WASHER, 3/8 SAE FLAT	150923	1
2	5/16 FENDER WASHER	151053	2
3	WASHER, 5/16 SAE FLAT	151754	3
4	SCREW, 1/4-20 X 3/4 FLAT HEAD PHILLIPS MACHINE	154657	4
5	NUT, WING 5/16-18	161037	1
6	NUT, WING 3/8-16	161715	2
7	ROD, THREADED 3/8-16 X 6" LG	161829	1
8	SCREW, 1/4-20 X 3/4 FLAT HEAD PHILLIPS MACHINE	165120	2
9	BRACKET, MOUNT	165786	1
10	PLATE, WELDMENT VISE MOUNT	165787	1
11	PLYWOOD, VISE MOUNT	165788	1
12	WASHER, FLAT 5/16 ID X 3/4 OD	165789	2
13	NUT, WING 1/4-20	165790	2
14	WELDMENT PLATE, VISE MOUNT	165792	1
15	PLYWOOD, VISE MOUNT	165793	1

## NOTES

## NOTES



**BARRANCA DIAMOND LIMITED WARRANTY**

Barranca Diamond warrants to the original retail purchaser for a period of 90 days except as noted, from the date of purchase all products covered by this Warranty to be free of defects in materials and workmanship.

This Warranty shall not apply to any parts that have been subjected to misuse or improper service, that had been damaged in transit or handling, or that have been altered or repaired by unauthorized representatives. This Warranty does not cover defects caused by or resulting from misuse, abuse, neglect or damage caused by accident or the failure to provide reasonable maintenance. This Warranty is void if the product or any of its individual components is altered or modified by the purchaser or if the product is used in a manner or with a blade not recommended by the manufacturer.

Any claim arising under this Warranty must be submitted by the original purchaser within the warranty period specified above, and shall include proof of purchase. During said warranty period Barranca Diamond shall, at its option, either replace or repair, at no charge to the original purchaser, any parts or components that are found to be defective by Barranca Diamond. Barranca Diamond shall not be responsible for or obligated to pay for freight or other transportation related costs or expenses in connection with any defective products or components that are either returned to Barranca Diamond's facility or any authorized repair station and/or any replacement products or components that are shipped from Barranca Diamond pursuant to this Warranty.

Parts and labor needed to maintain products and the replacement of components due to normal wear and tear are the purchaser's responsibility and are not covered by this Warranty. All products or components replaced under warranty become the property of the manufacturer. All replacement parts will be considered to be part of the original product and any warranty on such parts will expire coincidentally with the original Warranty. Barranca Diamond will pay for parts and labor in connection with warranty repairs conducted by Barranca Diamond or its authorized repair centers. Replacement part(s) installed by anyone else will be provided without a charge for such replacement part(s), but this Warranty will not apply to labor charges in connection therewith.

IN NO EVENT SHALL ANY LIABILITY UNDER THIS WARRANTY EXCEED THE REPLACEMENT COST OF ANY DEFECTIVE PRODUCT OR COMPONENT THEREOF, AND BARRANCA DIAMOND SHALL NOT BE LIABLE FOR ANY INCIDENTAL OR CONSEQUENTIAL DAMAGES OR FOR ANY OTHER DAMAGE OR LOSS NOT EXPRESSLY ASSUMED AS SET FORTH HEREIN.

The foregoing constitutes an expressed warranty on the terms set forth above and is the only warranty or warranties applicable to the products it covers. All other warranties, including, without limitation, the implied warranty of merchantability and/or fitness for a particular purpose or use being denied. This limited warranty is expressly in lieu of all other warranties, whether expressed or implied.

**WARRANTY:** For your (1) one year warranty to be effective, complete the online Product Registration as soon as possible. Visit [www.mkdiamond.com/registration/](http://www.mkdiamond.com/registration/)

**SPECIFICS APPLICABLE TO LIMITED WARRANTY OF DIAMOND BLADES, CORE BITS, POLISHING TOOLS AND SAWS****Laser Welded Blade and Bit Warranty**

If the laser weld between the segment and the steel core or barrel fails during normal use, the blade or bit will be replaced free of charge. Blades and bits damaged due to careless or improper use are not covered under this warranty.

**Brazed Blade, Bit, and Cup Wheel Warranty**

If the brazed bond between the segment and the core, barrel, or cup fails within the first .050 of segment wear, the blade, bit, or cup will be replaced free of charge. Blades, bits, and cup wheels damaged due to careless or improper use are not covered under this warranty.

**Continuous Rim Blade Warranty**

If the bond between the rim and the core fails during normal use, the blade will be replaced free of charge. Blades and bits damaged due to careless or improper use are not covered under this warranty.

**Exclusions**

Barranca Diamond does not warrant the following components, which carry their own manufacturer's warranty for the indicated periods:

***Electric Motors Manufacturer's Warranty***

Baldor: 1 year

Ryobi: 1 Year

Soga: 1 Year

***Gas Engines Manufacturer's Warranty***

Honda: 2 years

**Engine Power Information**

Engine power ratings are calculated by the individual engine manufacturer and the rating method may vary among engine manufacturers. Barranca Diamond Products makes no claim, representation or Warranty as to the power rating of the engine on this equipment and disclaims any responsibility or liability of any kind whatsoever with respect to the accuracy or the engine power rating. Users are advised to consult the engine manufacturer's owners manual and website for specific information regarding the engine power rating.

**REPLACEMENT PARTS**

Replacement parts for this tool may be ordered from your Barranca Diamond distributor or directly from Barranca Diamond. Please have the following information ready before calling:

- Model and serial number of the machine
- Date of purchase
- Description of parts being ordered (see parts list)

**RETURN MATERIALS PROCEDURE**

To expedite the service relative to the return of a product purchased through Barranca Diamond, please have the following information available:

- Model and serial number of the machine
- Date of purchase
- Distributor's name

Then please call Barranca Diamond at (310) 523-5867 or toll free at 800-630-7682 to obtain a Return Goods Authorization number (RGA) authorizing the return.

Please Note:

- Ensure your item(s) are prepaid to the destination
- Return items must have been purchased within the previous twelve (12) months
- Follow the packaging instructions in the following section
- Be sure to include the RGA number, return address and your phone number on or within the return shipping box.

**PACKAGING INSTRUCTIONS**

Ship the equipment using its original shipping crate if possible. Secure inside the shipping crate. Ensure all parts are secured in the packaging to prevent movement. Do not ship the equipment partially exposed.

**BD Drop Saw**  
OWNER'S MANUAL & PARTS LIST



**BARRANCA DIAMOND**

Barranca Diamond Products, Inc.  
1315 Storm Parkway  
Torrance, CA 90501

Toll-Free: (800) 421-5830  
Phone: (310) 539-5221  
Fax: (310) 539-5158  
[www.barrancadiamond.com](http://www.barrancadiamond.com)